



**Jewellery, Watches and  
Objects of Vertu**  
to include  
**Ancient Jewellery and Antiquities**



**Thursday 29th November 2018  
at 2pm**

**Catalogue J10**

## BOARD of DIRECTORS

Pierce Noonan	Managing Director and CEO	020 7016 1700	pierce@dnw.co.uk
Nimrod Dix	Executive Chairman	020 7016 1820	nimrod@dnw.co.uk
Robin Greville	Head of Systems Technology	020 7016 1750	robin@dnw.co.uk
Christopher Webb	Head of Coin Department	020 7016 1801	chris@dnw.co.uk

## AUCTION SERVICES and CLIENT LIAISON

Philippa Healy	Head of Administration (Associate Director)	020 7016 1775	philippa@dnw.co.uk
Emma Oxley	Accounts and Viewing	020 7016 1701	emma@dnw.co.uk
Christopher Mellor-Hill	Head of Client Liaison (Associate Director)	020 7016 1771	christopher@dnw.co.uk
Chris Rumney	Client Liaison Europe (Numismatics)	020 7016 1771	chrisrumney@dnw.co.uk
Chris Finch Hatton	Client Liaison	020 7016 1754	finch@dnw.co.uk
David Farrell	Head of Logistics	020 7016 1753	dave@dnw.co.uk
James King	Deputy Head of Logistics	020 7016 1833	james@dnw.co.uk

## JEWELLERY, WATCHES and OBJECTS of VERTU

Frances Noble	Head of Department (Associate Director)	020 7016 1781	frances@dnw.co.uk
Laura Smith	Specialist	020 7016 1782	laura@dnw.co.uk

## COINS, TOKENS and COMMEMORATIVE MEDALS

Christopher Webb	Head of Department (Director)	020 7016 1801	chris@dnw.co.uk
Peter Preston-Morley	Specialist (Associate Director)	020 7016 1802	ppm@dnw.co.uk
Jim Brown	Specialist	020 7016 1803	jim@dnw.co.uk
Tim Wilkes	Specialist	020 7016 1804	tim@dnw.co.uk
Nigel Mills	Consultant (Artefacts and Antiquities)	020 7016 1700	nigelmills@dnw.co.uk
Peter Mitchell	Consultant (British Hammered Coins)	020 7016 1700	petermitchell@dnw.co.uk
Douglas Saville	Consultant (Numismatic Literature)	020 7016 1700	douglassaville@dnw.co.uk

## BANKNOTES

Andrew Pattison	Head of Department	020 7016 1831	andrew@dnw.co.uk
Thomasina Smith	Specialist	020 7016 1832	thomasina@dnw.co.uk
Michael O'Grady	Consultant	020 7016 1700	michaelogrady@dnw.co.uk

## MEDALS and MILITARIA

Nimrod Dix	Head of Department (Director)	020 7016 1820	nimrod@dnw.co.uk
Oliver Pepys	Specialist (Associate Director)	020 7016 1811	oliver@dnw.co.uk
Mark Quayle	Specialist (Associate Director)	020 7016 1810	mark@dnw.co.uk
John Hayward	Consultant	020 7016 1700	johnhayward@dnw.co.uk
Arkadi Kilman	Consultant (Russian Awards)	020 7016 1700	akilman@dnw.co.uk
Dixon Pickup	Consultant (Militaria)	020 7016 1700	dixon@dnw.co.uk

## TECHNOLOGY and MEDIA

Robin Greville	Head of Systems Technology (Director)	020 7016 1750	robin@dnw.co.uk
Ian Anderson	Head of Online Services (Associate Director)	020 7016 1751	ian@dnw.co.uk
Jan Starnes	Head of Photography (Associate Director)	020 7016 1773	jan@dnw.co.uk
Ian Kington	Photographer	020 7016 1774	iank@dnw.co.uk
Henry Browne	Photographic Consultant	020 7016 1774	henry@dnw.co.uk
Will Bennett	Senior Press Officer	07770 694254	will@dnw.co.uk
Danielle Quinn	Online Marketing	020 7016 1772	danielle@dnw.co.uk

## UK REPRESENTATIVES

Richard Gladdle	Northamptonshire and the Home Counties	richardgladdle@dnw.co.uk
Garry Charman	The Midlands	garrycharman@dnw.co.uk
Michael Trenerry	The West Country	michaeltrenerry@dnw.co.uk
Jon Mann	North of England	jonmann@dnw.co.uk
Colin Fraser	Scotland	colinfraser@dnw.co.uk

## OVERSEAS REPRESENTATIVES

John Burrridge MG	Australia Western Australia	johnburrridge@dnw.co.uk
Tanya Ursual	Canada Ontario	tanyaursual@dnw.co.uk
Michael Gietzelt	Germany Berlin	michaelgietzelt@dnw.co.uk
Eiichi Ishii	Japan Tokyo	eiichiishii@dnw.co.uk
Natalie Jaffe	South Africa Cape Town	nataliejaffe@dnw.co.uk
Dr Andy Singer	United States of America Maryland	andysinger@dnw.co.uk

**DIX NOONAN WEBB Ltd**  
16 Bolton Street  
Mayfair  
London W1J 8BQ  
Tel: 020 7016 1700  
Fax: 020 7016 1799  
VAT No. GB 562 8504 32

Bankers: Lloyds, 39 Piccadilly, London W1J 0AA. Sort Code: 30-96-64. Account No. 00622865  
Swift Code: LOYDGB2L IBAN: GB70LOYD30966400622865 BIC: LOYDGB21085

**Account Enquiries:** accounts@dnw.co.uk  
**General Auction Enquiries:** auctions@dnw.co.uk  
**To place Commission Bids:** www.dnw.co.uk  
**To book Viewing Appointments:** viewing@dnw.co.uk  
**To Order a Catalogue:** www.dnw.co.uk



AN AUCTION OF

# JEWELLERY, WATCHES AND OBJECTS OF VERTU

---

AUCTION

## Live Online Auction

With room bidding available at

16 Bolton Street

London

W1J 8BQ

Free live bidding:

**[www.dnw.co.uk](http://www.dnw.co.uk)**

Thursday 29th November 2018

at 2pm

---

VIEWING

Friday 23rd November 2018

16 Bolton Street, Mayfair, London W1J 8BQ

Strictly by appointment only

Evening Viewing Thursday 22nd November 5:00pm to 7:00pm

Monday 26th November 10:00am to 4:30pm

Tuesday 27th November 10:00am to 4:30pm

Wednesday 28th November 10:00am to 4:30pm

The Morning of the Sale 10:00am to 1:00pm

16 Bolton Street, Mayfair, London W1J 8BQ

Public viewing

---

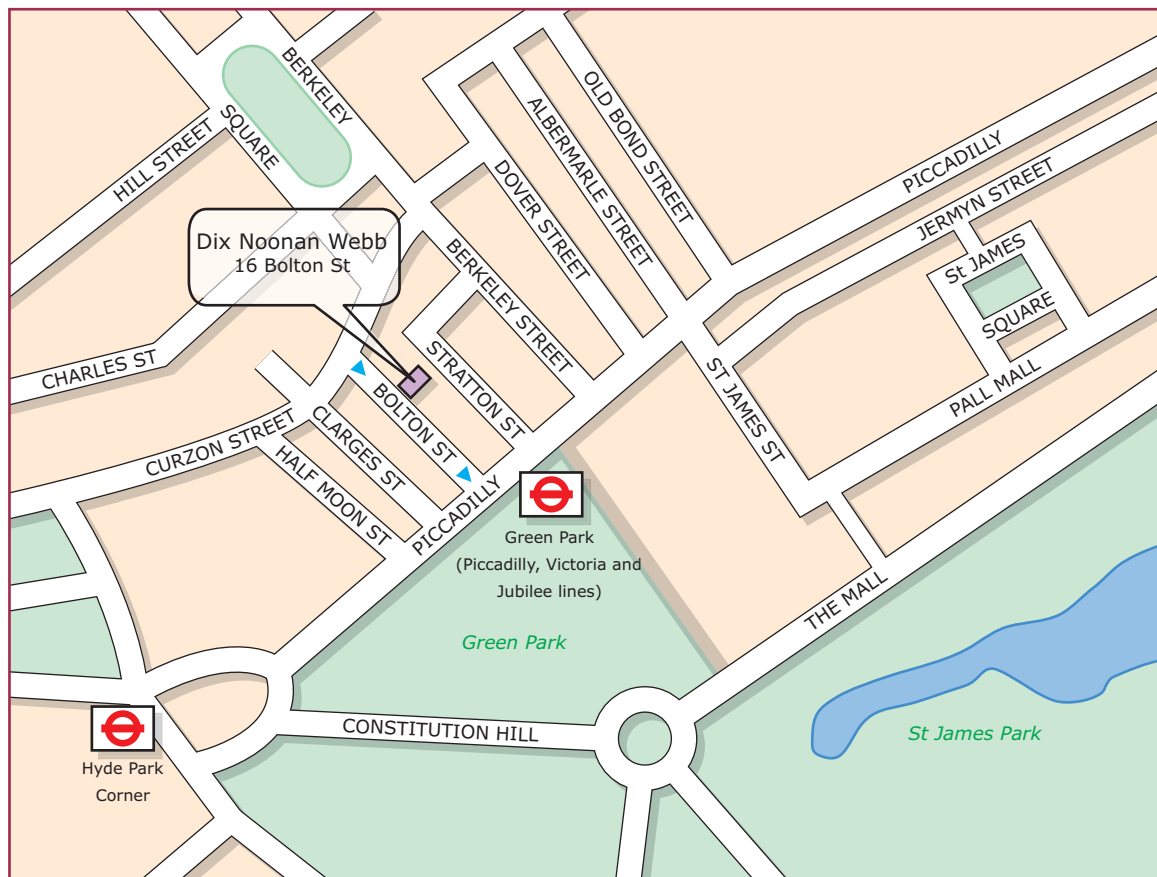
In sending commissions or making enquiries please contact:

Frances Noble or Laura Smith

## CONTENTS

*Please note: Lots will be sold at a rate of approximately 120 per hour*

Jewellery .....	1-319
Ancient Jewellery and Antiquities .....	320-331
Objects of Vertu .....	332-369
Watches .....	370-399





## Advance Bidding Facility

---

*We strongly advise clients to take advantage of our easy to use advance bidding facility which provides bidders with total control over their bids right up to the point that the lot is offered for sale.*

*Bids made online cannot be seen by others and do not go live until the actual moment that the lot in question is being offered for sale. All bids can be easily altered or cancelled by the bidder prior to this point. An automated email will be sent confirming all bids and alterations.*

*Anyone with a valid email address can easily register to bid online.*

*There is no additional charge for online bidding and it is not necessary to pre-register a payment card in order to do so.*

*It is recommended that all bidders execute their own bids either prior to the sale by using our online advance bidding facility or live as the auction is taking place.*

*Whilst we are still happy to execute all bids submitted in writing or by phone, fax, etc., it should be noted that all bids left with us will be entered at our offices using the same bidding facility to which all our clients have access. There is, therefore, no better way of ensuring the accuracy of your advance bids than to place them yourself online.*

*Please note that advance bids are executed in the order in which they are received; therefore in the event of a tie any equal bid placed earlier will win the lot.*

---

*For any support queries please contact:*

*Ian Anderson  
ian@dnw.co.uk  
020 7016 1751*

### **IMPORTANT INFORMATION FOR BUYERS**

All lots in DNW auctions are automatically reserved at the bid step which reflects 80% of the lower estimate figure, unless otherwise instructed by the vendor.

**Lots marked ‘\*’ are subject to VAT at 20% unless exported outside the EU**

**Lots marked ‘x’ are subject to importation duty of 5%  
on the hammer price unless re-exported outside the EU.**

### **SALEROOM NOTICES**

Should the description of a lot need to be amended after the publication of this catalogue, the amended description will appear automatically on the DNW website, [www.dnw.co.uk](http://www.dnw.co.uk). All such amendments are incorporated in the list of saleroom notices pertaining to this auction which are also posted on the DNW website. **Prospective bidders are strongly urged to consult this facility before sending bids or bidding online.**

### **TREATED GEMSTONES**

It is common practice for many gemstones to be subject to various treatments to improve their appearance. Sapphires and rubies are routinely heat treated to improve their colour and clarity, emeralds may be treated with oils or resin, other gemstones may be subject to treatments such as staining, irradiation or coating. Jade may be bleached, polymer/resin filled or dyed, or a combination of treatments used.

Bidders should be aware that, unless stated to the contrary in the catalogue description, it should be assumed that the gemstones may be treated. Where Reports are provided from Gem Laboratories, the opinions as to gradings and treatments of stones may differ slightly between laboratories and DNW cannot be held responsible for any discrepancies.

### **UNMOUNTED GEMSTONES**

Please note that VAT at 20% is chargeable on the Hammer Price of unmounted gemstones, excluding diamonds, rubies, sapphires and emeralds, and relevant lots are marked with an asterisk \*.

### **EXPORT OF IVORY**

The US Government has banned the import of ivory into the USA.

### **EXPORT OF OTHER ORGANIC MATERIALS**

Other organic materials, such as coral and tortoiseshell may be covered by CITES legislation, and this may or may not impact export to other countries, please see [www.cites.org](http://www.cites.org) for more information.

### **EXPORT OF WATCHES**

Please note that watches by CORUM, FRANCK MULLER, PIAGET, TUDOR AND ROLEX are subject to import restrictions into the USA.

Please also note that in some circumstances we are unable to ship the watch with its strap due to certain import restrictions regarding material derived from endangered or otherwise protected species.

### **BUYERS' PREMIUM**

Please note that the buyers' premium in this sale is 20% (plus VAT unless exported outside the EU).

### **CATALOGUE ILLUSTRATIONS AND THE INTERNET**

Prospective bidders are reminded that the DNW website features enhanced high-resolution enlarged colour illustrations of every lot in this auction.

### **PRICES REALISED**

The hammer prices of lots sold at DNW auctions are posted at [www.dnw.co.uk](http://www.dnw.co.uk) in real time and telephone enquiries are welcome from 09:00 on the day after the auction.

# Jewellery



# Jewellery

x1



**AN EARLY 20TH CENTURY CITRINE NECKLACE**, the filigree work shaped centrepiece with flowerhead details and set with graduated round and oval-cut citrines, supporting three matching graduated drops below, and between similar shoulders, to fine belcher-link back chain, *necklace length 41.5cm.*

£300-400

2



**A PAIR OF EARLY 19TH CENTURY TOPAZ AND WHITE PASTE CUFFLINKS**, adapted from buttons, each cushion-shaped cluster centred with a golden topaz, within a border of old-cut white paste stones, in domed closed back settings, the reverse of each engraved with a flowerhead, with later added fittings and connectors, with unassociated case, *diameter 14mm.*

£300-£500

3

**A 19TH CENTURY CITRINE AND PASTE SET PENDANT/BROOCH**, the central round mixed-cut citrine in gold closed back foiled setting, mounted within a white paste set border, with suspensory loop and brooch fitting, *diameter 23mm.*

£200-£300







**A VICTORIAN GOLD STRAP BRACELET**, the flexible mesh-link bracelet with embossed decoration of fruiting vines, the wrap-over clasp composed of a circular boss with applied ropetwist and wirework detail, centred with a pearl, rose-cut diamond and blue enamel flowerhead cluster, the boss hinged to reveal glazed locket compartment within, (*pearl untested and unwarranted*), clasp boss diameter 33.5mm, bracelet width 20mm £1,400-£1,800

**A VICTORIAN GOLD BROAD HINGED BANGLE**, with applied bead, ropetwist and wirework detail to the front, centred with a line of half pearls, bangle width 28mm, bangle internal diameter 58mm. £700-£900





6

**A LATE VICTORIAN SEED PEARL SET HEART PENDANT**, the heart-shaped pendant pavé set to the front with half seed pearls, to plain suspensory loop, on curb-link chain necklace, *pendant length 15mm, excluding suspensory loop.*  
£100-£120



7



**AN EARLY 20TH CENTURY ACROSTIC PENDANT**, the heart-shaped knife-edge hoop pendant spaced with claw set mixed-cut diamond, emerald, amethyst, ruby, emerald, sapphire and topaz - spelling DEAREST, around a central claw set heart-shaped cabochon opal drop, mounted in yellow gold, to polished bale, *pendant length 24mm.*  
£400-£500

8

**A 19TH CENTURY RUBY AND DIAMOND DOUBLE HEART AND ARROW BROOCH**, the arrow bar brooch with rose-cut diamond set head and tail, supporting a similarly set double heart motif beneath crown surmount, one heart centred with a pinched collet set old brilliant-cut diamond, the other with a mixed-cut ruby, *brooch length 53mm.*  
£400-£500



9



**A LATE VICTORIAN/EDWARDIAN ENAMELLED DOUBLE HEART BROOCH**, composed of two open latticework hearts accented with seed pearls and red enamel, beneath a red enamel tied ribbon bow surmount with central old brilliant-cut diamond, mounted in yellow gold, in semi fitted case, *brooch width 21mm.*  
£300-£400



**FOUR ANTIQUE BROOCHES**, comprising a half pearl set double heart and ribbon bow brooch/pendant, a foiled back citrine and half pearl round cluster brooch, a foiled back round crystal brooch in a plain closed back setting and an oval mixed-cut amethyst brooch. £200-£240

**11 A VICTORIAN OPAL SET CLADDAGH RING**, the bezel modelled as a pair of hands clasping a heart-shaped cabochon opal, mounted in yellow gold, inside of the shank inscribed 'LLE, March 3, 1851', ring size  $1\frac{1}{2}$ . £200-£300



12



**A LATE 19TH CENTURY HEART-SHAPED OPAL AND SEED PEARL CLUSTER RING**, the heart-shaped cabochon opal within a cluster surround of seed pearls, mounted in 15ct yellow gold between trifurcated shoulders, shank hallmarked for Chester 1897 and bearing maker's mark 'W G M', ring size  $N\frac{1}{2}$ . £150-£200

13

**AN ANTIQUE HALF PEARL AND DIAMOND SET PANEL SET RING**, the 19th century shaped oval panel centred with a collet set old brilliant-cut diamond within a cluster surround of slightly graduated half pearls, to a border of small rose-cut diamonds, mounted in yellow gold, to a later shank (split) with trifurcated shoulders, principal diamond approximately 0.35 carats, ring size  $N$ . £1200-1500



---

14



**A PAIR OF DIAMOND SOLITAIRE EARSTUDS**, the brilliant-cut diamonds in single four claw yellow precious metal mounts, with screw back stud fittings, stamped '18k', *total diamond weight approximately 1.7 carats.* £1500-2000

---

15



**A PAIR OF 18CT WHITE GOLD AND DIAMOND EARRINGS AND A PAIR OF OPAL EARSTUDS**, the first of octagonal openwork panel design, set with brilliant-cut diamonds, stud fittings hallmarked, the second pair set with round cabochon opals within polished yellow precious metal surrounds, stud fittings stamped '375', *first panel dimensions 13mm x 11.5mm.* £200-£300

---

16



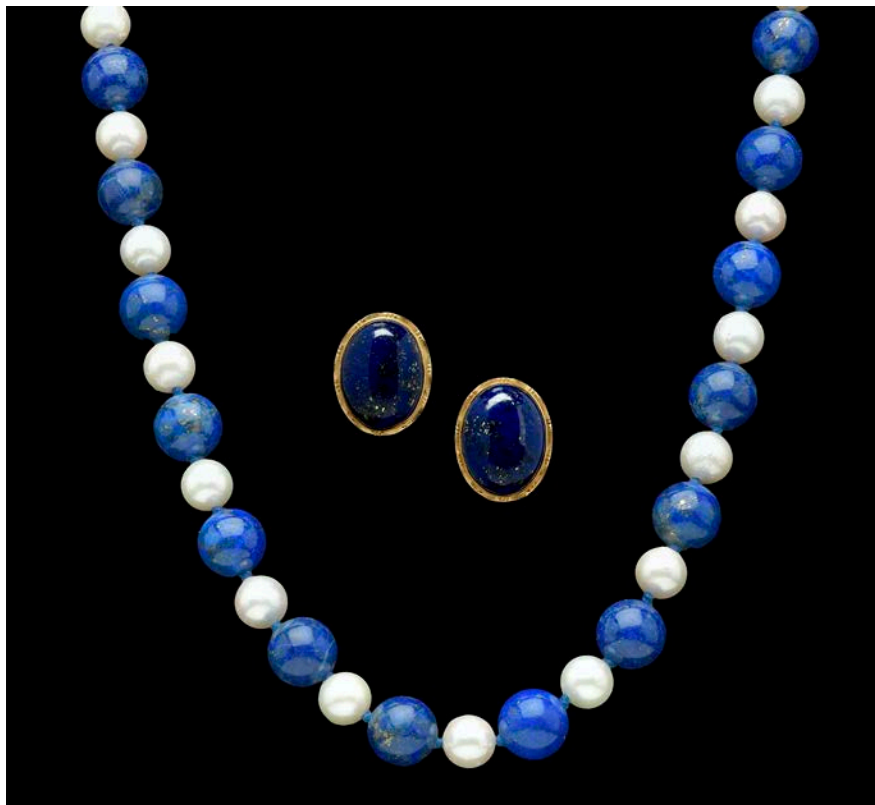
**A THREE STONE SAPPHIRE AND DIAMOND BROOCH**, the oval cabochon sapphire between two old brilliant-cut diamonds, all rubover set within domed mount, to an openwork bar brooch, mounted in yellow precious metal, (*brooch adapted from a ring*), *total diamond weight approximately 1 carat, bar brooch length 53.5mm.* £800-1200

---

17



**A STAR SAPPHIRE SET BAR BROOCH**, the oval cabochon pale blue sapphire claw set to plain bar brooch mount, stamped '18k', *brooch length 58mm.* £340-£400



**A LAPIS LAZULI AND CULTURED PEARL NECKLACE AND EARCLIPS**, the necklace of spherical lapis beads with cultured pearls spaced between, to a reeded spherical yellow precious metal clasp, stamped 14k, together with a pair of lapis lazuli earclips, the oval cabochons in yellow precious metal mounts, stamped '14k', with post and clip fittings, *necklace length 70cm, earclip length 18mm.* £200-£240

**A SAPPHIRE, RUBY AND DIAMOND SET FLORAL SPRAY BROOCH**, set with round-cut rubies and sapphires and graduated old brilliant-cut diamonds, mounted in gold and silver, *brooch length 41mm.* £300-£500



**AN 18CT GOLD AND DIAMOND SET NECKLACE**, comprising chain sections of flattened curb-links spaced by panels pavé set with brilliant-cut diamonds, clasp stamped '18k' and '750', with London import marks, *length 46cm.* £600-£800



**A CAMEO BROOCH**, the oval shell cameo carved to depict a lady in profile, with applied diamond set necklace and diadem detail, in a lozenge-shaped filigree mount with green stone accents, together with a costume jewellery brooch, *cameo brooch length 60mm.* £100-150



**A 19TH CENTURY GOLD MOUNTED OVAL SHELL CAMEO BROOCH**, carved to depict Hebe and the eagle, within a border of engraved scrollwork and interlocking hoops, *width 5.6cm.* £360-460



**A SHELL CAMEO BROOCH**, the oval shell cameo carved to depict a classical goddess wearing a floral headdress accompanied by an eagle carrying a torch, possibly Hebe and Zeus, collet set within a polished mount accented with four oval cabochon garnets and ropetwist detail, mount stamped '9ct', *brooch length 63mm.* £300-£400





**A WEDGWOOD OVAL PLAQUE BROOCH**, late 19th century, the grey/green jasperware panel depicting Aurora, goddess of Dawn, in her horse drawn chariot, preceded by a winged cherub bearing a torch, the 'Genius of Light', within an outer border of rose-cut diamonds, millegrain set, white precious metal mounted, unmarked, reverse with impressed mark 'Wedgwood' and date letter, *length 52mm*. £400-£600



**A GROUP OF THREE CAMEO BROOCHES**, the first a shell cameo depicting the profile of Apollo, wearing a laurel wreath head-dress and carrying a lyre, in a gold scroll embossed mount; the second comprising a shell cameo depicting the profile of Hermes, wearing a winged cap, in a silver and marcasite mount, and a further cameo brooch, *first brooch length 55mm*. £240-£300

Apollo was the Greek god of music and Hermes was the Greek messenger god.



**A 19TH CENTURY MICRO-MOSAIC PANEL BRACELET**, comprising seven circular micro-mosaic panels depicting classical Roman ruins and buildings, including the Colosseum, the Pantheon, the Forum, the Temple of Vesta etc. each set within a black glass border, in gold collet link settings, (some damage), with unassociated case, *bracelet length 17.5cm*. £1,600-£1,800



AN ANTIQUE CORAL BEAD NECKLACE, the single strand of slightly graduated antique tonneau-shaped *coralium Rubrum* coral beads to a later S-shaped yellow precious metal clasp, necklace length 47cm. £400-600

Please note coral is covered by CITES legislation and may be subject to trade and import/export restrictions.



AN INTERCHANGEABLE RING SET, comprising a ring mount and seven interchangeable ring heads, including ruby and sapphire set pavé clusters, emerald and diamond set clusters with foliate borders, a foliate cluster with turquoise accents, a cultured pearl and a small gold coin, both with foliate borders, all screwing into a bezel within a further foliate border, to wirework shank, mounted in yellow precious metal, cased, ring size J. £400-£600



**A CORAL SET PENDANT NECKLACE**, the circular panel pendant with applied bead, ropewist and wirework detail, centred with an oval *coralium Rubrum* coral cabochon, suspended from a reeded belcher-link chain necklace between trios of sliding cylindrical beads with textured finish, ropetwist borders and applied bead detail, reverse of the pendant stamped '21k', necklace length 48cm.

£1,000-£1,500

Please note coral is covered by CITES legislation and may be subject to import/export and trade restrictions.

30



**A 'PADPARADSCHA' SAPPHIRE AND DIAMOND PENDANT**, the cluster pendant composed of seven claw set pear-cut pinky-orange sapphires with small brilliant-cut diamond accents between, mounted in 18ct yellow gold, hallmarked, on a fine 9ct gold curb-link chain, clasp hallmarked, pendant length 25.5mm.

£400-£600

31

**A PEAR-CUT CITRINE PENDANT**, the faceted citrine claw set in a 9ct yellow gold pendant mount, to plain bale, mount hallmarked and bearing maker's mark 'JHL', length including bale 33mm.

£150-£200



32



**THREE GEM SET RINGS**, comprising an Edwardian ring centred with a sapphire, within an openwork millegained surround accented with small single-cut diamonds, shank stamped '18', together with a garnet quatrefoil cluster ring and a garnet and half pearl cluster ring, mount hallmarked for 9ct gold. **£200-300**

33

**TWO GEM SET RINGS**, comprising a tiered sapphire and diamond cluster ring, shank stamped '18ct', and a diamond set half hoop band ring, mounted in 18ct white gold, shank hallmarked, together with a paste set bombé dress ring, shank stamped '750', *first ring size M, second ring size P*. **£400-£600**



34



**THREE GEM SET DRESS RINGS**, comprising an oval-cut amethyst example, mount stamped '18ct', a large oval-cut smoky quartz example, mounted in yellow precious metal and a square cushion-cut smoky quartz example, mount stamped '9ct'. **£300-£400**

35

**THREE ASSORTED RINGS**, the first a five stone diamond ring claw set with graduating old-cut diamonds, shank stamped '18'; the second a diamond crossover ring, collet set with two brilliant-cut diamonds; the third a 9ct gold smoky quartz set ring, *first ring size O*. **£200-£300**





**A DIAMOND SET NECKLACE**, the semi articulated centerpiece set with brilliant and baguette-cut diamonds, mounted in yellow precious metal, to a later box-link back chain, *necklace length 38cm.* £1,000-£1,500

**A TANZANITE, DIAMOND AND RUBY DRESS RING**, the cushion-shaped tanzanite in four claw setting, bordered by marquise-cut diamonds, with ruby highlights, between brilliant-cut diamond set shoulders, white precious metal mounted, the shank stamped '750', accompanied by a GIA Gemmological Report, *ring size Q.* £2400-3400

The Gemological Institute of America Report no. 2181157112, dated 8th February 2017, confirms the weight (unmounted) of the tanzanite as 10.49 carats, measurements 13.50mm x 11.49mm x 8.15mm, colour: Violetish Blue, treatment: heated.







A GLAZED LOCKET PENDANT, BY MURREL BENNETT & Co, the circular glazed locket within a whiplash surround, with a blister pearl drop below, reverse stamped '15ct' and bearing Murrle Bennett & Co maker's mark, pendant length 60mm. £260-£300

A PAIR OF AMBER SET EARRINGS, each with lily pad surmount suspending a collet set cabochon amber set drop below, (amber untested for treatment), on post fittings stamped '14k\*', length 3.7cm. £60-£80



A GEM SET BROOCH, ATTRIBUTED TO DORRIE NOSSITER, the rectangular brooch asymmetrically set with a ground of vari-coloured gemstones, of muted shades, incorporating tourmalines, fire opals, citrines, amethysts, etc., with gold foliate details and entwined scrolling tendrils, within silver rectangular outer frame, brooch dimensions 3.7cm x 1.8cm. £300-£500

**Dorrie Nossiter** (1893-1977) was born in Aston, Birmingham, and studied at the Central Municipal School of Art, Margaret Street, Birmingham, from 1910-1914. Shortly afterwards she moved with her family to Crafnant, Dorset, and after marrying Ernest Guy Robinson in 1922, moved to London where she lived and worked in Lissenden Gardens, NW5. Many of her designs drew inspiration from floral and botanical themes, inspired by her love of gardening, and working with the Arts and Crafts principles of honest design and workmanship.

Her typical choices of gemstones, as seen in this brooch, were aptly described as "*chromatic harmonies and contrasts rather than shapes and textures*". (Hinks, 1983)

See: Hinks, P., *Twentieth century British Jewellery 1900-1980*, Faber & Faber, 1983, page 110.







**A MIXED LOT OF JEWELLERY ITEMS**, including a small musical notation bar brooch accented with seed pearls, a diamond five stone ring, a lady's small fob watch, case stamped '14k', and further assorted earrings, chains, rings, etc. **£300-£500**



**A COLLECTION OF ASSORTED JEWELLERY**, comprising a 9ct gold gentleman's wristwatch by Garrard (lacking strap), a Victorian gold sapphire set bar brooch, a silver buckle, import mark for London 1896, a 9ct gold Royal Artillery brooch, a small diamond set butterfly applied to a bar brooch, a 9ct gold bar brooch stamped 'BABY', an Australian Regimental gold brooch, a 9ct gold shield-shaped medallion, a 9ct gold cultured pearl set bar brooch, a Victorian stickpin, two Victorian silver brooches, a silver heart-shaped page marker, a late Victorian silver circular pill box, a late Victorian silver whistle, two thimbles and a Sacred Heart ornament in glazed oval frame. **£300-£400**



**A COLLECTION OF ASSORTED JEWELLERY**, including two silver mounted rivière necklaces set with round-cut white paste and cabochon blue paste respectively, a 19th century citrine and lasqué-cut diamond flower brooch, a suite of modern sapphire and diamond set jewellery, two *corallium Rubrum* coral bead necklaces, a nephrite bead necklace, a moonstone ring, a coral set ring, an opal set stickpin, a silver buckle, by Deakin & Francis, etc. **£600-£800**

Please note coral is covered by CITES legislation and may be subject to trade and import/export restrictions.



**A COLLECTION OF ASSORTED JEWELLERY ITEMS**, including an elasticated carved jet panel bracelet, a 9ct gold retractable toothpick fob, a ruby and rose-cut diamond set fleur-de-lys brooch, a 9ct gold cross pendant on chain, a 9ct gold swivel fob seal, a baton and knot-link chain, stamped '9ct', a Victorian silver Aesthetic movement oval hinged locket pendant, etc.

£260-300



**A SMALL COLLECTION OF JEWELLERY**, including a 9ct gold lady's wristwatch by Omega, a tennis themed gold novelty brooch, a garnet and citrine set scorpion brooch, a single row uniform cultured pearl necklace, a pair of gold mounted paste set earrings, a cameo brooch, a citrine and seed pearl cluster ring, etc.

£300-£500



**AN AMETHYST SET BRACELET, RING AND BROOCH SUITE**, comprising a graduated five stone bracelet, a two stone bar brooch and single stone ring, all set with rectangular step-cut amethysts, mounted in yellow precious metal, *ring size P*. £200-£300



**A SMALL COLLECTION OF ANTIQUE JEWELLERY**, comprising hinged oval locket pendant with applied buckle detail, on chain, three further locket pendants, a pair of tassel drops on later earring pendants, and a further tassel pendant. £300-£400



**A SMALL COLLECTION OF JEWELLERY**, including a 9ct gold lady's Omega wristwatch, a three row graduated cultured pearl necklace to a half pearl and amethyst cluster clasp, a 9ct gold and amethyst bar brooch, a small single stone diamond ring and a silver chain bracelet. £300-£400





A SMALL GROUP OF EASTERN JEWELLERY, comprising a silver gilt mounted jade set necklace, a yellow precious metal mounted jade hinged bangle, clasp stamped '18' and a pierced carved jade panel ring, (all jade untested for treatment).

£360-£460



A SMALL COLLECTION OF JEWELLERY, comprising a pair of 18ct gold and opal set pendant earrings, an emerald and diamond triple row ring, mounted in white precious metal, a black boulder opal set ring by Charmain Harris and a pair of chalcedony set earstuds, by the same maker.

£300-£400



A SMALL GROUP OF AGATE JEWELLERY, comprising a chain necklace with banded beads, a Victorian silver mounted dirk brooch and a pink banded agate panel brooch.

£150-£200



A COLLECTION OF TEN ASSORTED RINGS, including a hardstone cameo and a shell cameo ring, an opal doublet and diamond ring, a ruby and diamond ring, a 9ct gold dress ring, a 22ct gold wedding band, a ruby set eternity band and three silver mounted citrine and amethyst set rings.

£300-£500



A SMALL COLLECTION OF JEWELLERY, including a long *corallium Rubrum* coral bead necklace, and another smaller example, a small three stone diamond ring, a pair of nephrite jade and half pearl cluster earrings and a cased Edwardian bar brooch, all jade untested.

£240-£300

Please note coral is covered by CITES legislation and may be subject to trade and import/export restrictions.



A SMALL COLLECTION OF ASSORTED JEWELLERY, including a pair of blue zircon earclips, the round-cut stones in polished yellow precious metal flowerhead mounts, with screw back fittings, together with a half pearl snowflake cluster bar brooch, a pearl set stickpin/collar stud (pearl untested), cased, two rows of uniform *corallium Rubrum* coral beads, two cultured pearl necklaces and a 9ct gold case lady's wristwatch.

£100-200

Please note coral is covered by CITES legislation and may be subject to trade and import/export restrictions.



A SMALL COLLECTION OF UNMOUNTED GEMSTONES, comprising three Burmese rubies, three sapphires and two synthetic stones, *the rubies weigh 0.77, 0.53 and 0.46 carats respectively.* £200-300



A SMALL GROUP OF GEM SET JEWELLERY, comprising three rings, the first a square diamond panel ring, the raised square pavé set with brilliant-cut diamonds, mounted in white precious metal, shank stamped '750', the second centred with a step-cut emerald, to a broad pierced floral two colour band set with brilliant-cut diamonds, and the third a pavé set diamond oval panel ring, to chain-link shank, together with a lapis lazuli buddha pendant, mount stamped '750'. £1,000-£1,200



A SMALL GROUP OF RINGS, comprising a three stone diamond ring, mounted in white precious metal, an 18ct yellow gold signet ring, a white precious metal wedding band, a further yellow gold ring, split and with vacant setting and a gem set ring, adapted from a swivel eternity band. £300-400



A SMALL GROUP OF JEWELLERY, comprising a pair of brilliant-cut diamond single stone earstuds, claw set in white precious metal, a 22ct gold wedding band and a pair of 9ct gold cufflinks, *earstuds total diamond weight approximately 0.5 carats.* £300-£500



**A SAPPHIRE AND DIAMOND SET PENDANT**, the oval cabochon sapphire drop millegrained collet set within a semi articulated hoop surround accented with pinched collet set rose-cut diamonds mounted in gold and silver with engraved decoration to the reverse of the setting, suspended on a later silver chain, *pendant length 75mm.*

**£400-£600**

**60**

**A SAPPHIRE AND MOTHER O' PEARL RING**, BY MAUBOUSSIN, the central square panel set with four round sapphires, between mother-o'-pearl inlaid shoulders, to polished shank, yellow precious metal shank signed 'MAUBOUSSIN,PARIS', and stamped '18 KTS and numbered '0 1028', *ring size I (leading edge).*

**£200-£300**



**61**



**A DIAMOND FLOWERHEAD RING**, the central brilliant-cut diamond illusion set within a surround of millegrained single-cut diamond set petals, mounted in two colour precious metal, shank indistinctly stamped '18', *ring size L.*

**£200-£240**





**A SILVER FIGURAL DONKEY RING, BY MOSHEH OVED, CIRCA 1940s**, the angular design of the donkey modelled with its head down, its long ears forming the top of the ring, the shank inset with later added sizing beads, unmarked, ring size 1½. £600-£800

A Polish-Jewish immigrant, **Mosheh Oved** (1885-1958), also known by his anglicised name Edward Good, was a charismatic and talented jeweller, sculptor, poet and writer. He came to London around 1902 and trained as a watch maker. Initially he was based in Fetter Lane, Holborn, later moving to 1, New Oxford Street. In 1938 he became the owner of a celebrated Bloomsbury antique shop called **Cameo Corner**, in Museum Street, near the British Museum. By now, a world expert on cameos and a highly original jeweller, Oved was an eccentric character, often seen dressed in long flowing purple velvet robes, entertaining his customers (which included Queen Mary) with stories and anecdotes.

According to one story, whilst sheltering in the basement of Cameo Corner during the Blitz, Oved first began modelling his animal rings to steady his trembling hands. His first ring was a lamb, perhaps a symbol of the ultimate sacrificial lamb, made from the silver of Oved's own cufflinks, after he learnt that a client's son had been killed in action. Oved went on to make numerous anthropomorphic rings, mostly in silver, but some in gold, modelled as charming animals and birds and often displaying human characteristics.

The vendor of this ring recalls how as a young girl in the early 1950s, her father had given her money to buy a Christmas gift from Cameo Corner. She had chosen the little donkey ring and had kept it ever since.

*Image of the original drawing by Mosheh Oved courtesy of The Ben Uri Gallery and Bridgeman Images.*



63



A DIAMOND SET HORSESHOE PENDANT, BY TIFFANY & Co., the platinum horseshoe set with brilliant-cut diamonds, to a fine belcher-link back chain, signed and stamped 'pt 950', in case and outer box, *horseshoe length 13.5mm.*  
£700-£800

64



A SILVER CHAIN BRACELET, BY TIFFANY & Co., the belcher-link chain with central oval panel stamped 'Please return to Tiffany & Co. New York, 925', in signed pouch, *bracelet length 19cm.*  
£60-£80

65

A SILVER AND ENAMEL BRACELET, BY TIFFANY & Co, the belcher links decorated with turquoise blue enamel, the clasp signed 'Tiffany & Co, Germany', with maker's mark and partial UK hallmark, *bracelet length 20.5cm.*  
£100-£150



66



A PAIR OF CULTURED PEARL EARSTUDS, BY TIFFANY & Co., the cream-white cultured pearls on white precious metal stud fittings, stamped 'T&Co', cased, pearl diameter 6mm. £140-£160

67

A CULTURED PEARL NECKLACE, BY TIFFANY & Co., the single row of uniform cultured pearls to a polished reeded 'signature X' clasp, in white gold, stamped 'T&Co' and '750', in signed wallet and outer box, necklace length 41cm. £600-£800



68

A 'HAPPY DIAMOND' RING, BY CHOPARD, the heart-shaped glazed bezel displaying a loose collet set brilliant-cut 'happy' diamond, within a brilliant-cut diamond set border, to a two colour flexible track-link ring, bearing maker's mark and numbered '9755108 82/8402-20', in Chopard case and accompanied by certificate, ring size K. £400-£600

Louis-Ulysse Chopard founded his eponymous watch making workshop in 1860 in North West Switzerland. His son, Paul Louis Chopard moved the company to Geneva in 1921. In 1963, the firm was sold to Karl Scheufele, a watchmaker from Pforzheim, Germany, whose family still own the firm today.

The 'happy diamond', a free floating brilliant-cut diamond behind clear sapphire crystal is a signature of the brand.



## Charles de Temple

Born In America in 1929, **Charles de Temple** was the son of an American film actor, Tom Mix. With no formal artistic training, Charles was self taught, working first as a sculptor in America before deciding to concentrate on jewellery design. He moved to England in 1957, soon becoming part of the swinging London scene.

In Post war Britain, the Modernist jewellery movement took longer to develop than the modernist art movement, not helped by a heavy tax on luxury goods and limited access to raw materials which meant that during the 1950s, production still focused on traditional pieces for the export market. Therefore, it was not until the early 1960s that a prominent British Modernist style started to emerge from the jewellery studios of London lead by designers such as *Andrew Grima, Charles De Temple, John Donald* and *David Thomas*, with their pioneered methods of melting and transforming gold and other precious metals into abstract forms which embraced both shape and texture.

Charles De Temple rose to fame after designing several pieces that featured in the 1965 Bond movie *Goldfinger*, including the actual gold finger used in the film.

From circa 1969-1975, he created his series of '**nervous jewels**', prickly cultural designs in two-coloured gold wire, of which the ring offered for sale here is an example.

---

69



**A CULTURED PEARL AND DIAMOND RING AND EARCLIP SUITE, BY CHARLES DE TEMPLE**, all of abstract textured finish and pierced whorl form with flared terminals accented with cultured pearls and small brilliant-cut diamonds, mounted in 18ct gold, hallmarked for London, 1978 and bearing maker's mark 'CdeT', the earrings with stud and clip fittings, ring size N. £2,000-£3,000

---

70



**A SAPPHIRE AND DIAMOND RING, BY CHARLES DE TEMPLE**, the stylised abstract ring with flared terminals, the tear-drop-shaped panels pavé set with graduated brilliant-cut diamonds and round-cut sapphires, mounted in yellow and white precious metal, stamped '18ct' and 'CdeT', ring size N. £600-£800



**AN 18CT TWO COLOUR GOLD WIREWORK BROOCH, BY CHARLES DE TEMPLE**, with central glazed panel enclosing dried rose petals, within a radiating design of two colour gold wirework, edged by trailing textured leaves and tendrils, the reverse centred with an applied shaped oval plaque, engraved: 'The rose that lives its little hour is prized beyond the sculptured flower, WILLIAM CULLEN BRYANT', with facsimile maker's signature below, hallmarked for 18ct gold, London 1966 and stamped 'CdeT', length 58mm. **£1,600-£2,400**

The inscription to the reverse of the brooch is from a poem by the American poet, **William Cullen Bryant** (1794-1878), a verse from his work 'A Scene on the Banks of the Hudson', reading:

*Loveliest of lovely things are they  
On earth that soonest pass away.  
The rose that lives its little hour  
Is prized beyond the sculptured flower.*

**72 A TWO COLOUR 18CT GOLD AND BERYL SET DRESS RING, BY CHARLES DE TEMPLE, 1969**, centred with a round-cut yellow/green beryl in four claw mount, within an angular four pointed setting, applied with two colour textured gold wirework detail, to broad tapering shank, signed 'C de T' and with full London hallmark for 1969, with original box, with gilt facsimile signature to the exterior, the interior silk reading 'Designed exclusively for Watches of Switzerland Ltd 14, New Bond Street, London W1', ring size L (leading edge). **£1,500-£2,000**







A GOLD CHAIN BRACELET, of alternate oval hoop and knot links, clasp stamped '15ct', length 18cm.

£200-300



AN EDWARDIAN GOLD EXPANDING BRACELET, the hinged sprung X-shaped polished links each accented with a small half pearl or a round cabochon turquoise, mounted in yellow gold, stamped '9ct', bracelet width 20mm.

£260-£300



A THREE COLOUR MULTI ROW BRACELET, composed of six square section three colour foxtail-link chains, to a clasp set with a cluster of mixed-cut rubies between two small carved jade panels (*jade untested*), mount stamped '750', bracelet length 19.5cm.

£900-£1,200





**A PAIR OF 9CT GOLD CUFFLINKS, BY DUNHILL**, the rectangular panels of abstract textured form to swivel backs, hallmarked and bearing maker's mark, in semi fitted maker's case, panels measure 24mm x 17mm. £300-£500



**A 1960s SAPPHIRE SET BAND RING AND AN AMETHYST DRESS RING**, the band ring of textured abstract form accented to the front with five marquise-cut sapphires, mounted in 9ct gold, hallmarked and bearing maker's mark 'CJLd', the second ring set with an oval cabochon amethyst within pierced Greek key border, mounted in yellow precious metal, stamped '18K', first ring size K. £240-£300

**A CABOCHON BERYL BOMBÉ DRESS RING**, the oval cabochon green beryl stone claw set above a domed pierced work foliate mount, in yellow precious metal, shank stamped '750', ring size Q. £600-£800



79



A 1940/50s GOLD AND DIAMOND SET SCROLLING BROOCH, composed of three pierced work ribbon scrolls, supporting a series of flowerheads each centred with a collet single-cut diamond, with a further spray of claw set brilliant-cut diamonds, *length 60mm.* £500-700

80

A 9CT GOLD HINGED BANGLE, the hollow bangle with bright-cut engraved detail to the front, hallmarked for London, 1961 and bearing maker's mark 'GJLd', *bangle internal diameter 59mm, weight 27gm.*

£240-£300



81

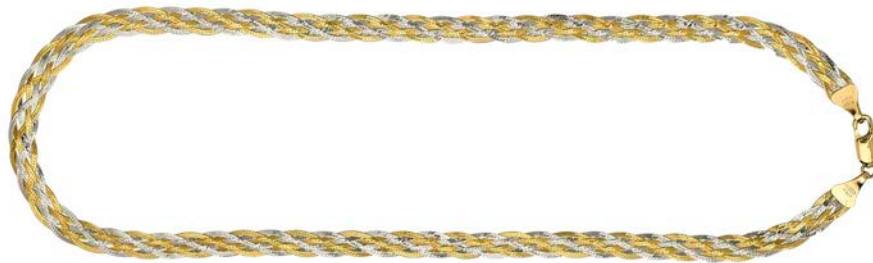
A DIAMOND SCROLLING SPRAY BROOCH, CIRCA 1950s, the arched stem of graduated baguette-cut diamonds within an entwined cluster of graduated brilliant, pear and marquise-cut diamonds, all claw set in white precious metal, to double pin fitting, *total estimated diamond weight approximately 9 carats, brooch length 46mm.*

£2,400-£3,000





**A PINK SAPPHIRE, DIAMOND AND CULTURED PEARL NECKLACE**, the multi-strand necklace of small uniform cultured pearls to a central stylised ribbon loop motif pavé set with graduated brilliant-cut diamonds, accented with a central cushion-cut and five pear-cut pink sapphires, to a similarly set domed oval clasp, mounted in yellow precious metal, with case signed Anne Bloom, necklace length 37.5cm. £1,600-£2,200



**A 9CT GOLD TWO COLOUR PLAITED WEAVE NECKLACE**, composed of five plaited flattened snake-link chains in yellow and white gold, clasp bearing UK import marks and maker's mark 'IBB', length 41cm. £40-£60





**AN 18CT GOLD MOUNTED FRESHWATER PEARL AND DIAMOND SET TASSEL NECKLACE**, the fancy-link chain with sliding freshwater pearls spaced by circular gold beads, suspending a torpede-shaped drop set throughout with rows of graduating brilliant-cut diamonds, with reeded bead and twin tassels below, each terminating with pearl set fringe, the clasp stamped '750' for 18ct gold, *chain length 48cm, with pendant drop length 13cm.* **£1,000-£1,500**



**A FRESHWATER PEARL AND GEM SET BRACELET**, the four rows of freshwater pearls to a clasp composed of an abstract cluster of claw set irregular cabochon vari-coloured gemstones, around a central cultured pearl, mounted in yellow precious metal, clasp stamped '14k', *bracelet length 20cm.* **£200-£300**



## Vivianna Torun Bülow-Hübe

The Swedish **Vivianna Torun Bülow-Hübe** was one of Georg Jensen's most innovative mid 20th century jewellers. She lived a colourful life in Paris through the 1940-1950s, mixing with famous names from the worlds of fine art, film and jazz. She was a friend of Pablo Picasso and in 1958 held a solo exhibition at the Picasso Museum in Antibes.

Toren designed with the need of the busy modern woman in mind, making simple adaptable pieces that could be added to for a dressier night-time look. She worked as a freelance designer for Georg Jensen from 1968 until 1978.

86

**A SILVER SPLIT COLLAR NECKLACE, BY GEORG JENSEN, DESIGNED BY VIVIAN TORUN**, the jointed polished collar in two pieces, signed 'Torun' and bearing Georg Jensen maker's mark, numbered '440' and stamped 'Denmark, Sterling', in signed case, *width of collar 15cm.* £400-£500



87

**A SMOKY QUARTZ SET SILVER BANGLE, BY GEORG JENSEN, DESIGNED BY VIVIAN TORUN**, the polished broad tapered torque style bracelet with flared terminals, to a detachable clasp composed of a spectacle set semi-cabochon square smoky quartz, the bracelet signed 'Torun' and bearing Georg Jensen maker's mark, numbered '203' and stamped '925 S, Denmark', in Georg Jensen box, *bangle width 59mm.* £400-£500



88



**A STAINLESS STEEL WRISTWATCH, DESIGNED BY VIVIAN TORUN, FOR GEORG JENSEN**, the circular mirrored dial with fine straight hands, in polished stainless steel case, to asymmetric torque bangle with flared terminal, reverse of case signed 'Georg Jensen, Denmark, Stainless steel, Water resistant, design 326, Torun' and numbered '110542', *dial diameter 29mm.* £300-£400

---

89

A SILVER TORQUE NECKLACE, BY GEORG JENSEN, the rigid silver torque with entwined detail, numbered 'A80', bearing Georg Jensen maker's marks and UK import marks, and stamped '925 S Denmark', in signed box, width 14cm. £300-£400



---

90



A SILVER AND CHRYSOPRASE RING, BY GEORG JENSEN, the oval cabochon green stone collet set within a ropetwist surround, between bifurcated shoulders, mount signed, stamped 'Sterling, Denmark' and numbered '17', ring size O. £100-£150

---

91

A SILVER BANGLE, DESIGNED BY POUL HANSEN, FOR HANS HANSEN AND GEORG JENSEN, the polished asymmetric torque style bangle with stylized leaf-shaped terminals, signed 'Hans Hansen' and 'Georg Jensen', stamped '925 S Denmark' and bearing UK import marks and Georg Jensen maker's mark, internal bangle width 73mm. £200-£300



**A SILVER COLLAR NECKLACE, BY GEORG JENSEN**, the polished silver torque collar of slightly concave form, signed, numbered '23B', stamped '925 S Denmark', and bearing UK import marks and maker's mark, in signed box, collar diameter 14cm. £400-£500



**A PAIR OF DANISH SILVER EARRINGS, BY HANS HANSEN**, the drops composed of polished convex segmented discs, suspended beneath matching segment surmounts, stamped '925 S' and bearing Danish assay marks and maker's mark 'HaH', to later post fittings, diameter 48mm. £60-£80

The Scandinavian modernist jewellers **Hans Hansen**, was founded in 1906 in Denmark. The founder Hans Hansen (1884-1940) made mostly holloware until he was successful enough to take a chance with starting a line of jewellery. In 1932 he asked his son and apprentice Karl Gustav (1914 - 2002 ) to design a line for him called 'Future'. This range was popular throughout the 1930s and 1940s, sometimes referred to as 'Funkis' (for Funky functionalism).

Hansen had exhibitions of work at the 1937 International Expo in Paris, and at the World Fair in New York in 1939. The firm also exhibited at the Nordisk Handcraft Exhibit in Paris in 1958 and 1965, and also in London, in 1958, at the Danish Design Show at the Victoria and Albert Museum. The Hans Hansen firm was taken over in 1991 by Royal Copenhagen who also acquired Georg Jensen.

**TWO DANISH SILVER NECKLACES AND MATCHING BRACELET**, composed of twisted ribbon links with hoop connections between, clasps stamped '925' and 'DENMARK', first necklace length 64cm, second necklace, lacking clasp, length 39cm, bracelet length 18cm. £200-260





**A BRIOLETTE-CUT AQUAMARINE BEAD NECKLACE**, the pale blue briolette-cut beads threaded to a polished spherical clasp, stamped '375', necklace length 38.5cm. £500-£600



**A STAR SAPPHIRE SET 18CT WHITE GOLD PENDANT**, by JASON CHARLES, the sunburst pendant centred with a round cabochon blue star sapphire collet set between five polished wavy rays, hallmarked for Birmingham, 2007 and bearing maker's mark 'JCW', with plain suspensory loop, to a belcher-link chain in white precious metal, unmarked, pendant length 70mm, chain length 67cm. £2,400-£3,000



97



A SCANDINAVIAN BROOCH, BY KJELL ALHÖMERSTADT, of stylised two colour geometric form, accented with a lapis lazuli bead, stamped '925' and bearing maker's mark, *brooch length 55mm.* £100-£120

98

A GERMAN MODERNIST BROOCH, of stylized openwork oval form, in polished yellow precious metal, stamped '14k Germany, Mappins', *brooch width 36mm.* £100-£150



99

AN 18CT WHITE GOLD AND DIAMOND BRACELET, BY VERSACE, the polished peaked geometric links with one face pavé set with brilliant-cut diamonds, clasp signed and stamped '750', bearing UK import marks and maker's mark 'WF', *bracelet length 19cm.* £1,000-£1,500



- 100** A 'PICASSO JASPER' AND SILVER COLLAR NECKLACE, the flattened rectangular beads of black-grey jasper with small matt finished silver spacers between, to matching clasp, stamped '925', length 47cm. **£180-£220**

'Picasso jasper' or 'Picasso stone' is a marble metamorphic limestone.



- 101** AN AQUAMARINE BEAD NECKLACE, the hexagonal section aquamarine beads graduating in length, with matt finished hollow gold bead spacers between, to a matching tonneau-shaped clasp stamped '585', necklace length 41cm. **£500-£600**



- 102** A LAPIS LAZULI BRACELET, composed of flattened rectangular lapis lazuli beads with small matt finished gold spacers between, to a matt finished rectangular panel clasp accented with a line of small brilliant-cut diamonds, clasp stamped '750' and '009ct', bracelet length 20cm. **£600-£800**





**A LARGE ANTIQUE EASTERN TURQUOISE BEAD NECKLACE**, composed of large uniform spherical turquoise and matrix beads, with small white precious metal beaded cluster links between, with a smaller turquoise and matrix bead either side of the rectangular clasp, *length 47cm.* £300-400



**A DIAMOND, TURQUOISE AND RUBY SET BRACELET**, composed of ribbon loop links set with single-cut diamonds, each centred with a claw set oval cabochon turquoise, with claw set round-cut ruby and brilliant-cut diamond flowerhead cluster links between, mounted in white precious metal, *length 19.5cm.* £1000-1500

**A RUBY, DIAMOND AND EMERALD RING**, the central reeded emerald bead, inset with a small brilliant-cut diamond, between two cabochon ruby and brilliant-cut diamond claw set clusters, mounted in white precious metal, shank stamped '750', *ring size Q.* £1200-1500





**A SOUTH SEA CULTURED PEARL NECKLACE**, the single row of slightly graduated white South Sea cultured pearls to a polished spherical 18ct yellow gold clasp, spaced with rubover set single-cut diamonds, *necklace length 49cm, pearl diameters range from 15-10mm.* £1000-1500



**A TWO ROW CULTURED PEARL BRACELET**, BY MIKIMOTO, comprising two rows of uniform cultured pearls with polished X-shaped spacer links to matching clasp, mounted in white precious metal, clasp bearing Mikimoto maker's mark, *bracelet length 17.5cm.* £100-£150



**A CULTURED PEARL BRACELET WITH GEM SET CLASP**, the four rows of uniform cultured pearls to a domed wirework clasp set with small clusters of claw set round-cut rubies, emerald and sapphires, and central diamond accent, mounted in yellow precious metal, stamped '750', *bracelet length 18cm.* £400-£500





**OF REGIMENTAL INTEREST: A JOINT COSSACK REGIMENT OF THE IMPERIAL GUARD CAP BADGE**, adapted to a brooch, with gilt crown above black enamelled Ataman crossed swords each surmounted with the imperial two headed eagle, loosely tied at the centre with a turquoise blue enamelled sash of the Order of St Andrew, with rope and tassel terminals, *width 4.8cm.*

£280-£340

**Provenance:** Ex lot 333, Sale no 2627, date 13th April 1983, Christie, Manson & Woods Ltd

**OF REGIMENTAL INTEREST: A GEM SET AND ENAMEL SWEETHEART BROOCH FOR THE EAST LANCASHIRE REGIMENT**, the wreath set with rose-cut diamonds and with further red, blue and green enamel detail, mounted in white precious metal, in semi fitted case, *brooch width 29mm.*

£80-£120



**OF REGIMENTAL INTEREST: A SMALL DIAMOND SET RING MODELLED AS A NAVAL OFFICERS BADGE**, the bezel in the form of a fouled anchor beneath a crown surmount within a wreath surround, millegrain set throughout with rose-cut diamonds, in two colour precious metal mount, shank stamped '18ct', *ring size J.*

£30-£50

A badge of this design was introduced for the peaked caps of commissioned officers of the Royal Navy in 1856. It is still in use today.



**OF REGIMENTAL INTEREST: A COLLECTION OF SEVEN NAVAL BROOCHES**, comprising a large Naval crown brooch, by Page of Plymouth, a seed pearl set Naval crown bar brooch, and a small Naval crown brooch with enamelled hoop surround, together with an enamelled Royal Yacht Squadron burgee bar brooch and three Naval rank badge brooches.

£240-£300

113

**OF ROYAL INTEREST: A DIAMOND SET ROYAL CYPHER BROOCH, FOR GEORGE V,** the cypher set throughout with graduated single-cut diamonds, mounted in white precious metal, in fitted case by Garrard & Co, *brooch length 24mm.* £300-400



114



**A MALTESE CROSS BROOCH,** each arm polished to one side and set with graduated single-cut diamonds to the other, mounted in two colour precious metal, *width 23.5mm.* £60-80

115

**OF MILITARY INTEREST: A DIAMOND SET BROOCH, FOR AN OFFICER ATTAINING GENERAL'S RANK AND MATCHING BADGE,** both modelled as a crossed sword and baton, the sword of Mameluke pattern, the brooch set throughout with single-cut diamonds and mounted in white precious metal, in fitted case by Garrard & Co, the badge in two colour 9ct gold, hallmarked, *brooch width 29.5mm.* £320-400



116



A PAIR OF FRENCH OPAL AND RUBY EARCLIPS, MID 20TH CENTURY, WITH MATCHING BROOCH ENSUITE, each comprising a round cabochon opal within a channel set surround of calibre-cut rubies, mounted in yellow gold closed back settings, with scroll engraved galleries, the earclips bearing French eagle's head assay marks, in a fitted case signed 'Harvey & Gore', (opals to earclips both internally crazed), earclip diameter 22mm.

£1,400-£1,800

117



A RUBY, SAPPHIRE AND DIAMOND SET SWIVEL ETERNITY RING, the central band channel set with calibre-cut rubies to one side and sapphires to the other, with two graduated old brilliant-cut diamond set swivels, mounted in white precious metal, ring size M.

£400-£600

118

A RUBY AND DIAMOND RING, the oval mixed-cut ruby claw set between stepped shoulders of channel set princess-cut diamonds, two colour mount hallmarked for 18ct gold, ring size P.

£200-£300





**A RUBY AND DIAMOND FLORAL SPRAY BROOCH, CIRCA 1950s-1960s**, the open spray set throughout with graduated brilliant and single-cut diamonds and round-cut rubies, mounted in white precious metal, in a later fitted case signed 'D.J. Lavender', brooch length 41mm. £900-£1,200



**A DIAMOND AND RUBY LINE BRACELET**, the white precious metal bracelet of box links alternately set with brilliant-cut diamonds and round-cut rubies, clasp stamped '750' for 18ct white gold, total diamond weight approximately 1.8 carats, length 18cm. £3,000-£4,000



## A Private Collection of Jewels by Barbara Bertagnolli

The London-based Italian designer Barbara Bertagnolli draws inspiration for her one-off pieces from the colours, unusual cuts and shapes of the gemstones she selects. Working directly without drawings she has her own distinctive technique combining silver and applied 24 carat gold with influences from the Medieval period, the Vienna Secession and contemporary abstract forms.



- 121** A SILVER AND GEM SET TORQUE NECKLACE, BY BARBARA BERTAGNOLLI, the rigid silver torque with cabochon moonstone terminals, raised band details, some gilded and with raised collet set vari-coloured gemstone accents, of round, oval and pear-shaped cabochon forms, the torque hallmarked for London, 1992 and bearing maker's mark, *torque internal diameter 11.5cm.* £500-700

- 122** A SILVER AND GEM SET HINGED BANGLE AND RING, BY BARBARA BERTAGNOLLI, the hinged solid silver bangle with applied geometric detail part gilded and accented with raised collet set vari-coloured gemstones, together with a matching ring set with a cabochon moonstone and a triangular-cut amethyst, both hallmarked and bearing maker's marks, *internal bangle width 62mm.* £500-700



- 123** A SILVER AND GEM SET PANEL BRACELET, ATTRIBUTED TO BARBARA BERTAGNOLLI, the slightly curved hinged rectangular panel links with incised and gilded geometric detail, accented with raised collet set vari-coloured gemstones, including moonstone, aquamarine, citrine, garnet, amethyst, etc, unmarked, *bracelet length 17cm.* £500-700



124

**A DIAMOND BAND RING**, the broad tapered matt finished band centred with three brilliant-cut diamonds in raised split collet settings, between small brilliant-cut diamond trefoil clusters, to raised borders spaced with rub over set small brilliant-cut diamonds and further ropetwist detail, combined weight of the principal diamonds approximately 0.75 carats, ring size J½.

£600-£800



125



**A BLUE TOPAZ PENDANT NECKLACE**, BY **TOM MCEWAN**, the large step-cut blue topaz in closed back pendant with scrolled suspensory loop, suspended on a stylized chain necklace of navette-shaped and round belcher links, to a S-shaped clasp accented with a pointed cabochon amethyst, bearing maker's mark, pendant length 62mm, chain length 43cm.

£200-300

**Tom McEwan** graduated from the Royal College of Art in 1986. He has exhibited in Paris, London and New York, and is a winner of the De Beers Diamond International Award.

From his workshop in Frome, Somerset, Tom uses traditional craftsmanship to create one of a kind pieces. His designs reference Art Nouveau, organic and Gothic influences, using unusual stones.



**A SEVEN ROW FRESHWATER PEARL CHOKER NECKLACE**, centred with a kidney-shaped rose-cut diamond panel of scrolling design, claw set with baroque pearl highlights, with a vertical slide action clasp, *length 33.5cm.*

£600-£800

127



**A LATE VICTORIAN SAPPHIRE AND DIAMOND SET OVAL BROOCH**, the oval hoop containing three foliate scrolls set with old-cut and rose-cut diamonds, and a trefoil flowerhead of claw set mixed-cut sapphires, mounted in gold and silver, *width 32mm.*

£500-£700

128



**AN OPAL AND SAPPHIRE CHAIN NECKLACE**, the fine curb-link chain spaced with collet set oval cabochon opals and oval mixed-cut sapphires, to S-shaped clasp, stamped '14k', *necklace length 62cm.*

£800-£900



**AN EDWARDIAN GEM SET HEXAGONAL PENDANT**, the openwork panel pendant of floral design, millegrain set throughout with rose-cut diamonds and centred with a round-cut sapphire, (*untested for natural vs. synthetic origin*), mounted in white precious metal, with fittings for a detachable back chain, together with a later 9ct white gold fine curb-link chain necklace, pendant width 29mm. £400-600

**A SAPPHIRE AND DIAMOND THREE STONE RING**, the oval mixed-cut sapphire claw set between two old brilliant-cut diamonds, claw set in white precious metal, *total diamond weight approximately 1.70 carats, ring size K.* £3000-4000





131



A PAIR OF DIAMOND AND MABÉ PEARL EARCLIPS, each mabé pearl within a surround of alternating polished and pavé set diamond sections, to hinged clip fittings, mounted in two colour precious metal, stamped '750', diameter 23mm.  
£500-£700

132

A QUATRE CLASSIQUE 18CT YELLOW, WHITE AND PINK GOLD BAND RING, BY BOUCHERON, composed of four bands of three colour gold and brown PVD finished band, stamped with maker's mark, 'BOUCHERON Au 750 T62', numbered 'N79108', with European convention mark, ring size U½ (leading edge).  
£700-900



133



A 'CHAMPAGNE' DIAMOND SET RING, the light brown tinted rectangular-cut diamond with canted corners claw set above shoulders set with lines of small brilliant-cut diamonds, mounted in a heavy white precious metal mount, principal diamond weight approximately 3.3 carats, ring size J.  
£4,000-£6,000



**A SOUTH SEA CULTURED PEARL AND DIAMOND RING SUITE**, comprising a golden pearl and diamond ring, the central pearl set to each side with trios of triangular-cut diamonds, between shoulders of yellow gemstones, together with a pair of earpendants, one mounted with a golden pearl, the other a white pearl, each suspended beneath a vertical row of four triangular-cut diamonds, on post fittings, with butterfly terminals, the ring shank stamped '750' for 18ct white gold, *pearl diameter for the ring 15mm, earrings 13mm and 13.5mm respectively, ring size R.*

**£3000-5000**

135



**A RUBY AND DIAMOND FIVE STONE RING AND A DIAMOND CLUSTER RING**, the first a narrow tapered 18ct gold band gypsy set with three mixed-cut rubies and two old brilliant-cut diamonds, mount hallmarked and bearing maker's mark 'A.A.', the second a flowerhead cluster ring millegrain set with single-cut diamonds, shank stamped '18ct', *first ring size M*.

£300-£500

136

**TWO SINGLE STONE DIAMOND RINGS**, both centred with illusion set brilliant-cut diamonds, the first with single-cut diamond set geometric shoulders, the second with textured foliate shoulders, both shanks stamped '18ct&pt'.

£400-600



137



**TWO DIAMOND SET RINGS**, the first comprising three rows of claw set brilliant-cut diamonds, mounted in 9ct gold, shank hallmarked; the second with three graduated illusion set brilliant-cut diamonds, in two colour mount, shank stamped '18ct&pt', *first ring size L*.

£500-£600

138



**THREE DIAMOND SET RINGS**, comprising a claw set three stone brilliant-cut diamond ring, a Victorian/Edwardian open claw set five stone diamond ring, and an illusion set two stone diamond crossover ring, together with a Victorian gold guard chain with gilt locket pendant.

£500-£600



**A PASTE SET BRACELET, CIRCA 1910-1920**, the openwork bracelet of millegrained geometric links set with round-cut white paste stones, mounted in silver, clasp stamped '935', in semi fitted case, length 18.5cm. £150-£200

140



**A GARNET, DIAMOND AND PEARL BROOCH**, the central square cabochon garnet collet set between old brilliant and rose-cut diamond set whiplash scrolls, with further pearl accents, mounted in gold and silver, (pearls untested), brooch length 27mm. £400-£600

141

**A GEM SET CROWN BROOCH**, the openwork crown in yellow precious metal set with graduated single-cut diamonds, and accented with four cabochon rubies, a central cabochon emerald and six pearls (untested), brooch width 42mm. £300-£400







**TWO 18CT GOLD SCORPIO PENDANTS**, each circular openwork pendant centred with a scorpion motif within an abstract textured border, both hallmarked and bearing maker's mark 'RES', one adapted to brooch, *diameter 34mm*. **£500-£600**



**A PAIR OF 18CT GOLD EARCLIPS**, BY JEAN SCHLUMBERGER FOR TIFFANY & Co, modelled as stylized ropetwist sprays, in 18ct yellow gold, signed 'Tiffany & Co, Schlumberger', stamped 'T&Co' and '750' and bearing UK import marks, in signed pouch and cardboard box, *length 30mm*. **£300-£500**



**A RUBY AND DIAMOND SET LEAF BROOCH**, CIRCA 1950s-1960s, modelled as a foliate frond, possibly *Elodea Crispa* (Curly water thyme), with a textured finish, accented with claw set round-cut rubies and brilliant-cut diamonds (*one diamond missing*), mounted in yellow precious metal, stem bearing maker's mark 'PAX' in lozenge-shaped punch, *length 90mm*. **£300-£400**



**A PAIR OF RUBY SET FLOWERHEAD EARCLIPS, BY BOUCHERON, 1940s**, the flowerheads with polished yellow gold petals around a central mixed-cut ruby and old brilliant-cut diamond clusters, the clip fittings stamped 'Boucheron, London', in fitted maroon leather case signed 'Boucheron, 180 New Bond Street, London', *earclip width 17-18.5mm.* £600-£800



**A 1950s 18CT GOLD AND DIAMOND SPRAY BROOCH**, the stylized wirework spray accented with small brilliant-cut diamonds, mount stamped '750' and bearing maker's mark 'CLRo', *length 48mm.* £300-400



**A DIAMOND AND RUBY SPRAY BROOCH, CIRCA 1940s/50s**, the textured two colour brooch modelled as a stylised fern, with single-cut diamond and round-cut ruby accents, *length 63mm.* £400-£600



**TWO 19TH CENTURY MOURNING BROOCHES**, the first of rectangular form, the glazed plaited hairwork panel within a scroll engraved mount, reverse inscribed 'M. Hill, Ob 25 July 1815, At 62'; the second of larger oval form, the glazed scrolled hairwork within a black enamel surround, the reverse inscribed 'Thos Howson, Obt March 6 1875, At 66 years, Isabella Howson, Obt Oct 11 1876, A 65 years', *first brooch length 29mm*. £160-£200



**A GEORGE III WHITE ENAMELLED GOLD MEMORIAL RING AND AN ANTIQUE FLOWERHEAD RING**, the broad flat band ring with lettering against white enamel ground reading 'Rt Jc Tanner, Ob 9 June 1814, Ae 1y 5ms 20ds', between fine black enamel borders, the interior inscribed 'Mr R. Tanner, died the 29th Oct 1817, aged 43', hallmarked for London, 1814 and bearing maker's mark 'I.P.'; the flowerhead ring centred with a rose-cut white stone within a surround of black enamel petals, between scroll engraved shoulders. £150-£200



**A GOLDEN TOPAZ AND DIAMOND CLUSTER RING**, the oval rose/mixed-cut golden topaz collet set within a cluster surround of small old brilliant-cut diamonds, mounted in yellow precious metal, *ring size M*. £600-£800



**A 19TH CENTURY SOUTH AFRICAN 'ZULU SHIELD' BROOCH**, the elliptical shield of oxidized silver, applied with spears and clubs, the reverse stamped 'J.PARDY DURBAN', length 50mm. £100-150

Novelty jewellery became popular in the late Victorian era, often inspired by nationalistic events, both at home and in the British colonies. In January 1879, Britain invaded the Zulu kingdom in South Africa, achieving a decisive British victory over the Zulus within just six months. British nationalist pride led to Zulu weapons being brought back as 'trophy' of their victory, including Zulu leather shields and weapons. The London jeweller John Brogden may well have seen such displays at the British Museum, and there is a similar example to the above Zulu brooch, made by Brogden, circa 1880s, in the collection of the British Museum, recreating the shield and weapon trophies as a brooch in oxidized silver and gold.

An almost identical design was registered in 1883 by M J Goldsmid of Birmingham, (National Archives, BT 43/55, no. 403248), this design possibly being sold on to jewellers such as Brogden.

See: Gere, C. and Rudoe, J., *Jewellery in the Age of Queen Victoria*, The British Museum Press, 2010, page 199, fig. 153.



**A VICTORIAN SCOTTISH HARDSTONE ARROW BROOCH**, the shaft composed of faceted carnelian, to a scroll engraved white precious metal head and tail, length 12cm. £100-£150



**TWO 15CT GOLD VICTORIAN BROOCHES**, both with applied bead and wirework decoration, the first marquise-shaped and centred with a cluster of old single-cut diamonds, the second lozenge-shaped and centred with a seed pearl cluster and with glazed locket panel verso, both stamped '15ct', first brooch length 45mm. £180-£200





**A GEM SET CROSS**, the Latin cross with later added barleytwist centrepiece between four earlier snake-head terminals, each pavé set with rose-cut diamonds and with round-cut ruby eyes, the reverse of each snake-head stamped '21', length 9.4cm. £900-£1,000

155



**A SMALL COLLECTION OF JEWELLERY**, comprising a fancy gate-link bracelet, an Edwardian openwork pendant on chain and a pair of Edwardian garnet set drop earrings. £200-£300

156

**THREE BRACELETS**, comprising a hollow curb-link chain bracelet, links stamped '15', and a gate-link bracelet stamped '9ct', both to heart-shaped padlock clasps hallmarked for 9ct gold, and a Victorian gold hinged bangle, with applied detail to the front. £300-£400



157



**A 9CT GOLD ALBERT CHAIN**, the slightly graduated curb-link chain with a swivel clasp to one end and suspending a T-bar drop, links and T-bar bearing partial hallmarks, length 37.5cm. £280-£320



**A MULTI COLOURED GEMSTONE NECKLACE AND BRACELET SUITE**, each composed of linked claw set vari-coloured oval mixed-cut gemstones, including garnets, fire opals, peridots, citrines, etc., silver mounted, clasps bearing partial hallmarks, necklace length 46cm, bracelet length 19cm. £200-£300



**A MATCHED SUITE OF MULTI GEM SET JEWELS**, comprising a bracelet of polished tapered links each channel set with graduated round-cut emeralds rubies or sapphires, with polished rectangular links between each accented with a single brilliant-cut diamond, clasp stamped '14k, 585'; the half hoop ring of plaited design, set with brilliant-cut diamonds and calibré-cut gemstones, mount stamped '14k'; the half hoop earrings of similar plaited design set with calibré-cut gemstones and brilliant-cut diamonds, mounts stamped '750', bracelet length 18cm, ring size O. £1,000-£1,200

---

**160**

**A GEM SET SWAN NECKLACE, BY CARRERA & CARRERA**, the centrepiece modelled as two swans, with round-cut ruby eyes and brilliant-cut diamond set wings, holding a pear-cut emerald drop on a fine chain suspension from their beaks, the whole to a belcher-link back chain, signed, numbered '37357' and stamped '750', necklace length 44cm. **£400-£600**

---

**161**

**AN 18CT AND DIAMOND SET SMALL HEART PENDANT**, pavé set to the front with brilliant-cut diamonds, pierced decorated to the reverse, on suspensory loop stamped with maker's mark 'EP' and '750', on fine 18ct gold box-link chain, pendant length, including suspensory loop, 15.5mm.

**£300-£500**



---

**162**

**A DIAMOND SET LADYBIRD PENDANT/CHARM, BY CARTIER**, the polished yellow gold ladybird with brilliant-cut diamond set posts in its wings, the underside signed 'Cartier, 750' and numbered '671122', and with further French marks, to hinged bale, length, including bale, 22.5mm. **£400-£600**

---

**163**

**A GEM SET HINGED BANGLE**, the sprung hinged torque style bangle in yellow precious metal, the terminals accented with cabochon rubies and sapphires and small brilliant-cut diamonds, mount stamped '750, Denoir', internal bangle width 55mm.

**£800-£1,200**





**AN EASTERN YELLOW PRECIOUS METAL FRINGE NECKLACE**, composed of a hollow stylised panel of scroll and bead design, suspending pear-shaped pendant drops below, to belcher-link back chain, and S-shaped clasp stamped with maker's marks and '99%', length 46cm. £600-£900

**A JARRETIÈRE BRACELET**, the broad mesh weave bracelet with tassel terminals to one end, and hinged foldover adjustable gem set foliate spray clasp, clasp stamped 'A18', length extended 28cm. £1,200-£1,500





---

**166**

**AN AMETHYST AND DIAMOND CLUSTER RING**, the oval stepped-cut amethyst claw set within a surround of brilliant-cut diamonds, mounted in white precious metal, shank stamped '18ct, plat', *ring size P*. £300-£400



---

**167**

**A DIAMOND SET DRESS RING**, the stylised floral bezel pavé set with graduated brilliant-cut diamonds, to central raised collet set stone, mounted in polished white precious metal, shank stamped '750', *ring size M*. £500-£700

---

**168**

**A TWO STONE DIAMOND CROSSOVER RING**, the outswept arms set with single and old-cut diamonds, to claw set old brilliant-cut diamond terminals, mounted in two colour precious metal with reeded shank, *combined weight of the two old brilliant-cut diamonds approximately 1 carat*, *ring size L*. £600-£800



---

**169**

**A STAR SAPPHIRE AND DIAMOND CLUSTER RING**, the pale grey-blue round sugar-loaf cabochon star sapphire millegrain set within a narrow cluster surround of old-cut diamonds, mounted in white precious metal, shank stamped '18ct' and 'plat', *ring size N*. £1200-1500



**A CHINESE LILAC AND GREEN JADE DISC MOUNTED AS A PENDANT**, with gold trailing branch detail set with seven oval hardstone cabochons in jade and agate, emulating fruits, on suspensory loop stamped '14k 585', (*jade untested for treatments*), diameter of disc 50mm, depth of disc 5mm, length including mount and bale 66mm. **£200-£300**



**A LATE 19TH/EARLY 20TH CENTURY CHINESE WHITE AND GREEN JADE PENDANT**, carved as a peach and finger citrus, the finger citrus known as the hand of Buddha fruit and symbolising Longevity, the peach symbolising Longevity and Marriage, joined by entwined stalks, on gold foliate edged mount formed of three medallions, within which are the characters reading Fu, Lu and Shou, symbolising Good Fortune, Happiness and Prosperity, suspended from bale stamped '14k 585', (*jade untested for treatments*), length 78mm x width 60mm x depth 18mm. **£600-£800**

The finger citrus is known as the hand of Buddha fruit and symbolises Longevity; the peach symbolises Longevity and Marriage.



- 172** AN INDIAN MULTI ROW BRAIDED BRACELET, the woven rows with three slider details, each applied to the front with a diamond set flowerhead cluster in kundan style setting, with blue enamel work to the sides of the clusters and further blue enamelled decoration to the reverse, the clasp diamond set and with vertical pin fastener, in fitted case, *length 16.3gm.* £2,200-£3,000

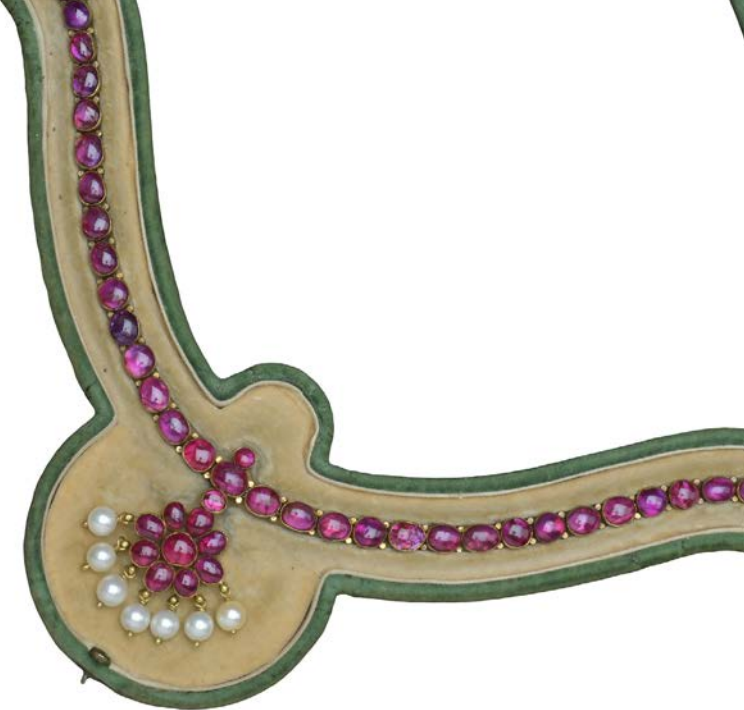
173



- A LATE 18TH-19TH CENTURY INDIAN CARVED EMERALD AND ENAMEL PENDANT**, the shaped pendant set to the front with a stylised cluster of foliate carved Mughal emerald beads and lasqué/table-cut diamonds, in foiled back kundan-work settings, the reverse decorated with polychrome enamel, of red, green and blue birds and foliage against a white background, to a later hinged bale, *pendant length excluding bale 37mm.* £2,000-£3,000

- 174** AN INDIAN GOLD MOUNTED RUBY CHOKER NECKLACE, composed of uniform cabochon rubies in collet mounts, with central pendant below, the pendant of cabochon ruby cluster, with fringe of pearl drops below, reverse engraved with scrolling foliate, on hinged fitting, (pearls untested for origin), to later clasp, (necklace extended by additional chain section), in shaped fitted case, necklace length (including extension) 37cm.

£2,000-£3,000



- 175** A PAIR OF INDIAN RUBY SET EARPENDANTS, of hollow construction, with tear-drop-shaped surmount and spherical bead below, with cabochon ruby set collar between, on loop fittings, yellow precious metal unmarked, length 5.8cm.

£500-£700

176



A SET OF FOUR INDIAN DIAMOND, RUBY AND EMERALD SET HINGED BANGLES, of scroll and foliate design set with round-cut rubies, emeralds and rose-cut diamonds, mounted in yellow precious metal, diameter 56mm.

£2,400-£3,000



177



**AN INDIAN RUBY SET CHAIN BRACELET**, the heavy snake-link chain bracelet to a screw shut clasp with applied bead and ropetwist decoration and accented with round cabochon rubies, mounted in yellow precious metal, *bracelet length 17.5cm, gross weight 65gm.* £1,200-£1,600

178

**A PORTUGUESE FANCY CHAIN BRACELET**, with barrel clasp set with half pearls and sapphire highlights, tongue stamped with gold guarantee marks for 800/1000 fineness, Oporto, post 1938, *length 18cm.* £500-£700



179



**A PAIR OF INDIAN HINGED BANGLES**, with twin makara head terminals to either side of the screw thread clasp, the bangles with applied clusters of beaded decoration, gold and with inner *lac* filled core, *inner diameter 4.8cm, outer diameter 6.5cm.* £900-£1,200

The bangle has traditionally been the primary ornament worn by Indian women. The use of 'lac' filling was widely used since ancient times - Lac is produced by a unique insect (*Tachardia lacca*), indigenous to Indian forests, and is secreted by the female, and is the only natural resin of animal origin. The lac - naturally a reddish colour, is used in a compound form to fill the core of hollow constructed parts of gold and silver jewellery to preserve its shape and prevent denting from impact during use.

See: Untracht, O., *Traditional Jewellery of India*, Thames & Hudson, 1997, page 172.

180

**A VICTORIAN SPRUNG COILED SERPENT BANGLE**, CIRCA 1840s-1850s, the hollow coiled bangle in sprung sections with engraved scale decoration, to head inset with an oval cabochon garnet within a cluster surround of graduated old brilliant-cut diamonds, and with ruby eyes, with small glazed locket panel to the inside, *length when coiled width approximately 10.5cm, height 7.0cm.* £10,000-£15,000



---

**181**

**A THREE STONE OPAL RING**, the three round cabochon opals in open claw settings with pairs of old brilliant-cut diamond accents between, mounted in 18ct yellow gold, shank hallmarked, and bearing maker's mark 'JWB', *ring size O*.

£400-£600



---

**182**

**A HALF PEARL AND DIAMOND CLUSTER RING**, the half pearl within a surround of old brilliant-cut diamonds, pinched collet set in silver to tapered polished shoulders, shank stamped 'SB&SLt' and '18ct', *ring size N*.

£260-£360

---

**183**

**A SINGLE STONE DIAMOND RING**, the cushion-shaped old-cut stone in open claw setting to reeded shoulders, mounted in 18ct gold, shank hallmarked, *diamond approximately 0.85 carats, ring size S*.

£800-£1,000



---

**184**

**A MID 19TH CENTURY GEM SET CLUSTER RING**, the round-cut garnet within a alternating surround of half seed pearls and mixed-cut emeralds, mounted in 15ct yellow gold, with scroll engraved shank, hallmarked for Birmingham, 1872 and bearing maker's mark 'T.B.R.', *ring size Q½*.

£200-£300



**A FANCY COLOURED DIAMOND AND PEARL NECKLACE**, the single row of slightly baroque natural pearls, with gold bead spacers between, suspending a 3.91 carat fancy greyish greenish yellow brilliant-cut diamond, collet set within a brilliant-cut white diamond surround, the pendant mounted in yellow precious metal, necklace clasp stamped '750' for 18ct gold, accompanied by Reports for the fancy colour diamond and the pearls, necklace length 43cm. £8,000-£10,000

The Independent Diamond Report Centre report, number ID8123, dated 30th January 2018, confirms the round brilliant-cut diamond weighs 3.91 carats, with a colour of Fancy Greyish Greenish Yellow and a clarity of SI2.

The Gem & Pearl Testing Laboratory of Bahrain, number 11/2006, dated 16th November 2011, confirms the strand of 105 pearls are of natural origin.

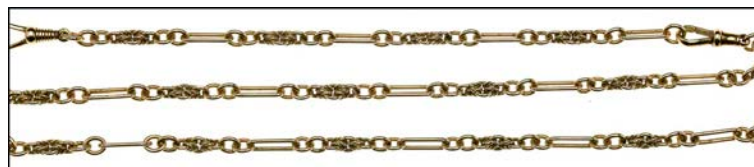


**A SAPPHIRE AND DIAMOND RING**, the oval mixed-cut sapphire collet mounted, within a border of old-cut diamonds, between stylised shoulders, all millegrain set, the mount pierced decorated and edged below by a row of old-cut diamonds, white precious metal shank, stamped '750', ring size K. £2,000-£3,000





A BLUE AND WHITE SAPPHIRE BEAD NECKLACE, composed of three rows of faceted sapphire beads graduating from blue to white, spaced by woven spheres of smaller similar beads, to similarly set tassel centrepiece, *necklace length 44cm*. £500-£700



A 9CT GOLD FANCY-LINK CHAIN NECKLACE AND BRACELET SUITE, each composed of fetter, belcher and knot links, to swivel clasps, hallmarked, *necklace length 47cm, bracelet length 18.5cm*. £300-£400



A LAPIS LAZULI SET LONG CHAIN NECKLACE, the faceted cushion-shaped lapis lazuli panels spectacle set to fine belcher-link chain, length 95cm. £80-£100



**A FRENCH HALF PEARL, DIAMOND AND LAPIS LAZULI BEAD BROOCH/PENDANT AND EARRING SUITE**, each comprising a polished and textured scroll and foliate centrepiece with central lapis bead, supporting tri-part flaring drop set with graduated half pearls and rose-cut diamonds, and a fringe below of further lapis bead drops in rose diamond set caps, the pendant with detachable half pearl set bale, the earrings to hook fittings, all mounted in yellow gold, bearing French eagle's head assay marks, *pendant length 76mm.* £900-£1,200



**A SAPPHIRE SET FLORAL BRACELET**, composed of graduated flowerhead cluster links of claw set pear-cut sapphires, mounted in yellow precious metal, to a chevron-link back chain, *bracelet length 18cm.* £700-£900



**A SAPPHIRE SET LONG NECKLACE**, the fine curb-link chain spaced with quatrefoil clusters of spectacle set oval mixed-cut sapphires, to S-shaped clasp stamped '14k', *necklace length 57cm.* £1,000-£1,200



**A BLUE AND WHITE ZIRCON PENDANT AND CLUSTER EARCLIPS**, the geometric pendant set throughout with round-cut white zircons to central principal blue zircon, mounted in yellow and white precious metal, suspended on a fine belcher-link chain, together with a pair of blue and white zircon cluster earrings, with screw back fittings, *pendant length 64mm*. **£200-300**

194

**A FIVE STONE SAPPHIRE AND DIAMOND RING**, the two brilliant-cut diamonds and three graduated mixed-cut sapphires claw set in white precious metal, shank stamped '18ct', *total diamond weight approximately 0.5 carats*, ring size P. **£300-£500**



195



**A DIAMOND TWO ROW HALF HOOP RING**, the front composed of two rows of tension set alternate brilliant and baguette-cut diamonds, mounted in white precious metal, shank stamped '14k', *ring size M½*. **£800-£1,000**

196

**A SINGLE STONE DIAMOND RING**, the brilliant-cut diamond claw set between collet set baguette-cut diamond shoulders, mounted in white precious metal, shank stamped '18ct', *principal diamond approximately 1.1 carat*, ring size Q½. **£1,200-£1,500**

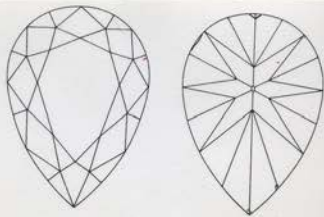


THE  
**PRECIOUS STONE LABORATORY**  
LONDON

**DIAMOND REPORT**  
Report Number: 970207

Carat Weight: 1.16  
Colour Grade: F - RARE WHITE +.  
Clarity Grade: VVS 2.  
Shape and Style: PEAR BRILLIANT

Measurements: 7.81 x 5.89 x 3.81 millimetres  
Total Depth: 64.7 % Table Facet Diameter: 64 %  
Polish: GOOD  
Symmetry: GOOD  
Girdle: THIN TO MEDIUM, BRUTED  
UV-fluorescence: STRONG, BLUE  
Comments: FINELY BEARDED GIRDLE IS NOT SHOWN.




Key to Symbols:  
• PINPOINT  
• BRUISE  
• NATURAL  
• EXTRA FACET

Diamond Colour Scale:  
D E F G H I J K L M N-R S-Z

Diamond Clarity Scale:  
IF VVS1 VVS2 VS1 VS2 SI1 SI2 P1 P2 P3

This Diamond Report describes the quality characteristics of the loose diamond following a thorough examination using ten times magnification hand lens and binocular microscope and a set of calibrated colour comparison diamonds. The grades and descriptions used are internationally agreed terminologies. This Diamond Report is not a warranty, guarantee, or valuation. The London Precious Stone Laboratory believes the information contained in this Diamond Report is an accurate assessment of the characteristics of the loose polished diamond at the date of grading.

Signed:   
Eric C Emms, FGA, DGA  
Director

Date of Grading: 28th January, 2002.

The London Precious Stone Laboratory  
25a Hatton Garden London EC1N 8BN  
Tel: 020-7404 4202 Fax: 020-7404 3797  
Web: www.precious-stoneclub.co.uk



A PEAR-CUT DIAMOND PENDANT, the diamond weighing 1.16 carats, F colour and VVS2 clarity, in claw setting highlighted with a border of brilliant-cut diamonds, millegrain edged, suspended from a diamond set bale, on fine curb-link platinum chain, with Report from The Precious Stone Laboratory, no. 970207, dated 28th January 2002, pendant length (including bale), 9mm, chain length 41cm. £3000-4000





**198** A DIAMOND SET SILVER GILT NECKLACE, the rivi re necklace of slightly graduated cluster links set with central foil backed lasque-cut diamonds within single-cut diamond surrounds, mounted in silver gilt, with a diamond set clasp, and a second later added double-S-shaped clasp, *necklace length 43cm.* **£700-900**



**199** A TURQUOISE FLOWERHEAD SPRAY BROOCH, CIRCA 1950s, each carved turquoise flowerhead centred with a claw set single-cut diamond accent, to wirework stems and diamond set ribbon tie, mounted in yellow precious metal, (turquoise untested), *brooch length 43.5mm.* **£300-£500**



**200** A VICTORIAN GOLD AND TURQUOISE SET HINGED CHILD'S BANGLE, CIRCA 1840s/50s, the hollow rectangular section hinged bangle in bloomed gold, with applied scroll decoration accented with cabochon turquoises, in original fitted case, *bangle internal diameter 52mm.* **£500-£800**



- 201** AN ART DECO DIAMOND SET PANEL BRACELET, composed of millegrained square panel links each pavé set with nine old brilliant-cut diamonds, mounted in white precious metal, with scroll engraved detail to the sides, clasp stamped 'J29.5', in a fitted gilt tooled case, total diamond weight approximately 6.75 carats, bracelet length 17.8cm. £2400-3000



- 202** A SEED PEARL SET GIARDINETTO PENDANT ON CHAIN, the woven basket pendant containing a spray of seed pearls set flowers and foliage, mounted in yellow gold, stamped '15crt', suspended on a belcher-link chain necklace, with plain cylindrical clasp, pendant length 28mm. £200-£300

- 203** A PAIR OF OPAL AND DIAMOND CLUSTER DROP EARPENDANTS, the oval cabochon opals claw set within cluster surrounds of old brilliant-cut diamonds, suspended from single-cut old brilliant-cut diamond surmounts, gold and silver mounted, to stud fittings, cased, earpendant length 18.5mm. £600-£800







**A DIAMOND SET FRINGE NECKLACE**, the festoon swag necklace of fine belcher-link chains highlighted with scrolled links each centred with a lasqué-cut diamond in raised open flowerhead claw setting, mounted in yellow gold, *necklace length 46cm.* £500-£700



**AN OPAL PANEL NECKLACE**, the fine fancy belcher-link chain suspending three rectangular flat cabochon opal links, clasp stamped '9ct', *necklace length 40.5cm.* £400-£600



**AN EDWARDIAN OPAL FRINGE NECKLACE**, the necklace composed of graduated belcher-link chain swags, with small claw set round cabochon opal drops between, mounted in yellow gold, *length 38cm.* £300-£500



**AN EDWARDIAN GREEN TOURMALINE AND DIAMOND PENDANT**, the Latin cross pendant of millegrained open scrollwork design set with six round/cushion-shaped mixed-cut green tourmalines and accented with old single-cut diamonds, in two colour precious metal mount, to plain suspensory loop, on a later fine white precious metal belcher-link chain necklace, *pendant length 47mm.* £300-£500

208

**AN EMERALD AND DIAMOND BAR BROOCH**, the polished and millegrained bar brooch channel set with calibr  -cut emeralds and spaced with three graduated rose-cut diamonds in raised square settings, mounted in white precious metal with scroll engraved sides, stamped '585' and bearing maker's mark 'RR', *length 36mm.* £100-£150



209



**A GEORGIAN STYLE GILT METAL CHAIN NECKLACE AND MATCHING BRACELET**, the textured belcher links with raised granular decoration, the necklace barrel clasp with pink paste set flowerheads, the bracelet clasp set with garnets, *necklace length 43cm.* £300-£500





**A 9CT GOLD WOVEN-LINK CHAIN BRACELET**, the ribbon chain of reeded woven-link form, to a small rectangular clasp with scroll engraved detail, hallmarked, *bracelet length 20cm.* £200-£300



**A PAIR OF 18CT GOLD AND DIAMOND HOUSE OF LORDS CUFFLINKS**, modelled as a portcullis beneath crown surmount, with brilliant-cut diamond highlights, mounted to swivel baton fittings, stamped 18ct, *length 17.5cm.* £400-£600

The portcullis is the emblem of the Houses of Parliament.

**A PAIR OF LAPIS LAZULI AND CABOCHON RUBY CUFFLINKS**, the carved lapis lazuli terminals of knot design, each centred with a collet set cabochon ruby, with chain connections, mounts stamped '585', *larger terminal width 16mm.* £300-500



**A PAIR OF SAPPHIRE SET CHALCEDONY CUFFLINKS**, each comprising two square panels, one larger, the second smaller, with radiating reeded detail, each centred with collet set cabochon sapphire, with chain connections, silver gilt mounted, stamped '925', *larger panel diameter 16mm square.* £120-180



**A CASED SET OF FOUR MOTHER O' PEARL AND SAPPHIRE STUDS/BUTTONS**, BY **CROPP & FARR**, the octagonal mother-o'-pearl panels with geometric decoration, each centred with a small scissor-cut sapphire, mounted in white precious metal, stamped '9, 375' and bearing maker's mark 'C&F', in a gilt tooled semi fitted case, signed 'Harrods, London'. **£200-£300**



**TWO PAIRS OF GOLD CUFFLINKS**, the first in 18ct gold, with hollow round bouton and torpedo-shaped terminals and chain connections, hallmarked; the second with engine-turned panel and square section baton terminals and chain connections, hallmarked for 9ct gold. **£140-£180**

**A PAIR OF ONYX AND DIAMOND CUFFLINKS**, the square polished onyx panels centred with millegrained collet set single-cut diamonds, to polished white precious metal borders and yellow precious metal backs with chain connections, mounts stamped 'GAF' and 'plat&9ct', *panels measure 10.5mm square*. **£300-£400**



**A PAIR OF GEM SET CUFFLINKS**, the circular panel terminals with brushed finish each inset with three baguette-cut blue stones around central millegrained collet set brilliant-cut diamond, mounted in white precious metal, the four panels stamped to the reverse 'GRETLE', '7', '37' and 'VII' respectively, adapted from buttons, with later swivel clasp connections, *panel diameters 13.5mm*. **£400-600**

218



A PAIR OF 9CT GOLD CUFFLINKS, the oval panels with reeded decoration, hallmarked, with chain connections, together with two stickpins.

£100-£120

219



**OF ROYAL INTEREST:** AN ENAMEL STUD AND BROOCH, TO COMMEMORATE THE 70TH BIRTHDAY OF KING CHRISTIAN X OF DENMARK, BY GEORG JENSEN, each modelled as an enamelled Danish flag, centred with the royal cypher and the dates 1870-1940, beneath a crown surmount, the brooch suspended from bar fitting, mounted in yellow precious metal, each stamped '585' to the reverse and bearing Georg Jensen maker's marks, in original red cases with crown detail to lid.

£200-£300

220



A LATE 19TH/EARLY 20TH CENTURY NOVELTY HAT PIN, the terminal modelled as a silver globe surmounted by a gold eagle with outspread wings, around the equator of the globe a blue enamel banner reading 'circumnavigamus'.

£100-£200

'Circumnavigamus' is Latin, the first person present active indicative of 'Circumnavigare' - to circumnavigate.

- 221** A GROUP OF FIVE STICKPINS, comprising a gold horse example, a pair of two colour stirrups, a seed pearl and diamond set crown, a pearl and diamond scroll motif (*pearl untested*), and a shell cameo example, all cased. £300-£400



- 222** A VICTORIAN BANDED AGATE AND ENAMEL MOURNING STICKPIN, the oval cabochon banded agate within a gold stickpin mount with black enamel detail, in a gilt tooled green leather case, signed 'West & Son, Dublin'. £80-£120



- 223** OF SPORTING INTEREST: A DIAMOND SET FOX HEAD STICKPIN AND A DIAMOND SET WOODCOCK HEAD STICKPIN, both set throughout with rose-cut diamonds, the fox with faceted ruby eyes, the woodcock with cabochon sapphire eye, mounted in gold and silver, both cased. £180-£220







**A 9CT GOLD COLLAR NECKLACE**, of graduated brick-link design, clasp hallmarked and bearing maker's mark 'NK', *necklace length 45cm.* **£240-£300**

**A 9CT GOLD CHAIN BRACELET**, the polished oval and knot links all hallmarked, to a heart-shaped padlock clasp, *bracelet length 20cm.* **£240-£300**



**TWO 9CT GOLD BRACELETS**, the first a gate-link bracelet, stamped '9 375', the second of hollow curb-links, stamped to the links '9ct', both with heart-shaped padlock clasps stamped '9ct', *first length approximately 19cm, second 18.5cm..* **£300-400**



- 227 OF SPORTING INTEREST: FOUR GAME BIRD BAR BROOCHES**, comprising a woodcock with polychrome enamel head, a pheasant in three colour gold with ruby eye, another three colour gold pheasant with enamelled head and a mallard duck with enamelled head, all in three colour gold with engraved feather detail, mounted on plain bar brooches.

£600-£800



- 228 OF SPORTING INTEREST: A GOLD AND ENAMEL KESTREL BROOCH**, the brooch realistically modelled as a kestrel, *Falco tinnunculus tinnunculus*, hovering in flight, with engraved textured feather detail and polychrome enamel head, the reverse stamped '15ct, 18ct', length 38mm.

£300-£500



- 229 OF SPORTING INTEREST: A GOLD WOODCOCK HEAD HAT PIN**, the terminal realistically modelled with textured feathers and round-cut garnet eyes.

£300-£400



- 230 OF SPORTING INTEREST: TWO GOLD ANGLING BROOCHES**, the first realistically and three dimensionally modelled as a salmon, with engraved scale detail and brilliant-cut diamond eye; the second modelled as a fishing rod with a polychrome enamel salmon, in 9ct gold, hallmarked and bearing maker's mark 'A&W', first brooch length 45mm.

£300-£500



---

231



**A DIAMOND HALF HOOP RING**, the rounded tapered band claw set with three rows of brilliant-cut diamonds, mounted in yellow precious metal, *total diamond weight approximately 1.75 carats, ring size M½, £600-£800*

---

232

**A SAPPHIRE AND DIAMOND WRAP-OVER RING**, with pavé set old brilliant-cut diamond arms, each terminating in a collet set oval mixed-cut sapphire or old brilliant-cut diamond, mounted in yellow and white precious metal, shank stamped '750', *principal diamond approximately 0.8 carats, ring size R. £1,400-£1,600*



---

233



**A DIAMOND AND THREE COLOUR RING**, the broad flat reeded three colour torque band ring with single-cut diamond set C-scroll terminals, stamped '750' for 18ct gold, *ring size Q. £150-£200*

---

234

**A DIAMOND CROSSOVER RING**, the two row design set with ten brilliant-cut diamonds, shank stamped 'ORRINI', with oval maker's mark, yellow precious metal mounted, *total diamond weight approximately 1.5 carats, ring size R. £600-£800*





A 9CT GOLD BRICK-LINK NECKLACE, of graduated form, clasp hallmarked, necklace length 39cm.

£300-£360

236



AN 18CT GOLD SAPPHIRE AND DIAMOND BROOCH, the polished circular hoop brooch set with a geometric pattern of collet set cabochon sapphires and brilliant-cut diamonds, hallmarked for Edinburgh, 2005 and bearing maker's mark for Anthony John Hope, diameter 28mm.

£500-£700

237

AN 18CT GOLD AND DIAMOND HOOP BROOCH, the angular hoop channel set with a row of brilliant-cut diamonds, hallmarked for Edinburgh, 1998 and bearing maker's mark for Anthony John Hope, diameter 34mm.

£500-£700







**AN EDWARDIAN PINK TOURMALINE AND SEED PEARL NECKLACE**, the articulated necklace of foliate and floral links to whiplash scroll centrepiece, set throughout with seed pearls and accented with two cushion-shaped mixed-cut pink tourmalines, to a ropetwist back chain with cylindrical clasp, mounted in yellow gold, stamped '15ct', in semi fitted shaped brown leather case, necklace length 44cm. **£600-800**

**TWO LATE 19TH/EARLY 20TH CENTURY GEM SET PENDANTS**, the first of circular hoop design, with central peridot drop and pearl highlights, on bale, on later 9ct gold chain, the second pendant blue stone set, with pearl details and drop below, reverse stamped '9ct', on bale, with curb-link chain, clasp stamped '14kt', pendant lengths 4.5cm and 5.5cm (including suspensory loops). **£260-300**



**AN EDWARDIAN AMETHYST AND SEED PEARL PENDANT**, the open scrolled pendant with foliate details set throughout with half seed pearls and accented with two round-cut amethysts, mounted in yellow gold, stamped '9ct', on a fine belcher and fetter-link chain, pendant length 60mm. **£300-500**

241

A DIAMOND CLUSTER PENDANT NECKLACE, the millegrained pear-shaped cluster drop set with graduated old brilliant-cut diamonds, on a linked millegrained collet set old brilliant-cut diamond suspension, to a knife-edge surmount spaced with similarly set stones and a fine fancy-link back chain, mounted in white precious metal, *pendant length 38mm.*

£600-£800



242



A YELLOW AND WHITE DIAMOND PENDANT, composed of concentric hoops of claw set brilliant-cut yellow and white diamonds, around a central larger claw set brilliant-cut yellow diamond, mounted in yellow and white 18ct gold, polished bale hallmarked, suspended on an 18ct white gold woven-link chain, *principal diamond weight approximately 0.18 carats, (yellow diamonds untested for natural colour), pendant diameter 22mm.*

£400-£500

243

AN AQUAMARINE PENDANT, the pear-cut aquamarine in pinched collet setting, with plain suspensory loop, to a belcher-link chain necklace, clasp stamped '9ct', *pendant length 28mm, chain length 37cm.*

£300-500





A GAS PIPE-LINK COLLAR NECKLACE, the flexible chain necklace in yellow precious metal, unmarked, length 42cm. £240-£300



A SMALL GROUP OF AQUAMARINE JEWELLERY, comprising a claw set step-cut aquamarine pendant, on belcher-link chain, an oval mixed-cut aquamarine and brilliant-cut diamond three stone ring, a pendant, ring and chain hallmarked for 18ct gold, together with a pair of oval-cut aquamarine earstuds, in 9ct gold mounts and an 18ct gold wedding band, both rings size G. £400-600



AN AQUAMARINE DRESS RING AND A PASTE SET RING, the first centred with an oval mixed-cut aquamarine, within a pierced work broad setting, to trifurcated reeded shoulders, and a sherry coloured paste set ring, within scroll engraved fancy mount, first ring size R, second O. £100-£150



**A TWO COLOUR 18CT GOLD ROPETWIST CHAIN NECKLACE**, composed of four entwined ropetwist chains, the clasp bearing UK import marks for 18ct gold, *necklace length 40cm.* **£1,000-£1,200**

248

**A SINGLE STONE DIAMOND RING**, the brilliant-cut diamond in six claw setting between single-cut diamond set shoulders, mounted in white precious metal, accompanied by a GCS Jewellery Report, *diamond weight approximately 1.3 carats, ring size N½.* **£4000-6000**

The Gemmological Certification Services Jewellery Report no. 78171-98, dated 6th August 2018, records that the brilliant-cut diamond has a weight of approximately 1.3 carats, with a clarity grade VS1/VS2 and a colour grade of E/F.







**A LATE 19TH/EARLY 20TH CENTURY GOLD MOUNTED GEM SET DRAGONFLY CLIP BROOCH**, set throughout with half pearls, with pairs of rubies and emeralds to the wings, and ruby set thorax, the wings with hinged clip, reverse stamped '15ct', in fitted case, (*inside lid relined*), width (*between wing tips*) 5.4cm. £600-£800

**A LATE 19TH CENTURY DEMANTOID GARNET AND DIAMOND SET BROOCH**, the realistically modelled dragonfly with outspread textured wings set with small old brilliant-cut diamonds and mixed-cut demantoid garnets, with a further round-cut demantoid garnet inset to the thorax, to a sprung hinged clip fitting, bearing indistinct maker's mark, wingspan 40mm.

£800-1200



**AN EARLY 20TH CENTURY PEARL, ENAMEL AND GEM SET CIRCULAR WASP BROOCH/PENDANT**, the wasp with baroque pearl abdomen, rose-cut diamond striped thorax, cabochon ruby eye and plique-à-jour enamel wings, seated on a branch with enamel leaves and cultured pearl bud, the whole within a hoop frame set with alternate mixed-cut rubies and rose-cut diamonds, the reverse showing the wasp also realistically engraved, mounted in yellow gold, diameter 30mm. £600-£800

Inspired by nature and naturalism, Art Nouveau jewellery typically incorporates themes of birds and insects, with peacocks, dragonflies and butterflies being recurrent subjects. The subject of the humble wasp was taken to new heights by *René Lalique*, the ground-breaking French jewellery designer and one of the foremost Art Nouveau craftsmen, whose exquisite designs have become synonymous with the Art Nouveau style.

252



A PAIR OF LATE 19TH/EARLY 20TH CENTURY CIRCULAR PANEL EARRINGS, each panel supporting a butterfly motif set with cabochon turquoise and amethysts, mixed-cut rubies, rose-cut diamond and seed pearls, and accented with black enamel, to later stud fittings, mounted in yellow gold, *diameter 18mm*.  
£200-£300

253

A DIAMOND SET BUTTERFLY BROOCH, the butterfly pavé set throughout with graduated old brilliant-cut diamonds, and with cabochon ruby eyes, mounted in yellow precious metal, *wingspan 22mm*.  
£500-£700



254



A DIAMOND, EMERALD AND RUBY SET BUTTERFLY BROOCH, the butterfly with pavé set old brilliant-cut diamond wings, diamond set thorax, carved emerald bead abdomen and cabochon ruby eyes, mounted 'en tremblant' to a diamond set bar brooch (adapted), with indistinct French marks to clasp, *brooch length 51mm*.  
£900-£1,200

255



A DIAMOND, EMERALD, SAPPHIRE AND RUBY SET CATERPILLAR CLIP BROOCH, the articulated segmented body pavé set with small brilliant-cut diamonds and accented with cabochon emeralds and sapphires, the head with cabochon ruby eyes and diamond set antennae, mounted in white precious metal, to double pin clip fitting, stamped 'WR', (*one small diamond missing*), in Harvey & Gore case, *length 74mm*.  
£1,200-£1,500



**A FRENCH SILVER MOUNTED WHITE PASTE FRINGE NECKLACE**, first half of the 20th century, set throughout with old-cut white stones, the front section supporting a fringe of graduating knife-edge bars, all stones individually claw set to flat backed mounts, the clasp with French lozenge mark and guarantee mark, with unassociated green leatherette case, *length 39.5cm.*

£600-£800

**AN EARLY 20TH CENTURY CABOCHON EMERALD AND DIAMOND RING**, BY TIFFANY & CO, the five slightly graduated sugarloaf cabochon emeralds within a surround of old brilliant-cut diamonds, in two colour precious metal mount, shank stamped 'Tiffany & Co', *ring size J½.*

£1,500-£1,800



---

258

A SINGLE STONE DIAMOND RING, the brilliant-cut diamond in simple four claw setting, mounted in 18ct white gold, bearing partial hallmark, *diamond weight approximately 1.2 carats, ring size M.*

£2,600-£3,000



---

259

A SINGLE STONE DIAMOND RING, the brilliant-cut diamond, *weighing 2.69 carats, K colour, VS2 clarity*, in simple four claw setting, mounted in 18ct white gold, bearing partial hallmark, with Anchorcert report, numbered 20013364, dated 11th December 2013, *ring size O.*

£6,000-£8,000







**A THREE STONE TANZANITE AND DIAMOND RING**, the central oval-cut tanzanite of 2.83 carats, claw set between two emerald-cut diamonds, in 18ct white gold polished mount, accompanied by a GIE gemstone report, *total diamond weight 0.57 carats, ring size O (leading edge)*. £3,200-£4,000

The Gemological Institute of Europe report, no. 420205751, dated 5th November 2015, confirms the diamond carat weight as 0.57 carats, colour grade E-F, clarity VVS and confirms the tanzanite weigh as 2.83 carats, AAA quality.

261

**A DIAMOND SET ETERNITY RING**, the band channel set with scissor-cut diamonds, mounted in polished white precious metal with engraved detail, *total diamond weight approximately 2.2 carats, ring size K*. £1,000-£1,500



262

**A LARGE PAIR OF DIAMOND CLUSTER EARRINGS**, the central flowerhead clusters composed of a total of 14 individually claw set brilliant-cut diamonds within entwined ribbon borders of claw set baguette-cut diamonds, mounted in white precious metal, accompanied by a GCS diamond report, *confirming the two central brilliant-cut diamonds weigh 0.96 and 0.99 carats respectively, total diamond weight approximately 15 carats, diameter 26.5mm*. £16,000-£20,000

The Gemmological Certification Services diamond report number 79178-42, dated 15th October 2018, confirms the first brilliant-cut diamond weighs 0.96 carats, colour G and clarity VS11 and the second brilliant-cut diamond weighs 0.99 carats, colour F and clarity VS12.





**A MULTI-GEM FRINGE NECKLACE**, the fine belcher-link chain supporting a fringe of slightly graduated spectacle set oval mixed-cut gemstones, including garnet, amethyst, citrine, peridot, etc., to an S-shaped clasp, stamped '585', *necklace length 41.5cm.* £1,000-£1,200



**TWO AMERICAN GEM SET AND ENAMELLED NOVELTY BRACELETS**, the first comprising vari-shaped sliding links on twin belcher-link chains, each link applied with motifs including a bee, a ladybird seated on a leaf, a diamond set pansy flowerhead, a frog, a seed pearl set crown, etc, the hollow links between spherical spacer beads, each link with maker's mark and stamped '14kp', together with a larger similar bracelet of hollow oval links, vari-gem set, applied motifs including a frog, a gem set butterfly, a cherub etc, each link stamped '14k', *first length 17.5cm, second 17cm.* £1,000-£1,500

---

265

**A CITRINE AND DIAMOND CLUSTER PENDANT AND RING SUITE**, the pendant comprising a pear-cut citrine and claw set brilliant-cut diamond cluster, suspended from a brilliant-cut diamond set bale, the oval cluster ring of corresponding design, to bifurcated shank, both mounted in yellow precious metal, *pendant length, including bale, 46mm, ring size M.*  
*£800-£1,200*



---

266



**A RUBY SINGLE STONE RING**, the oval mixed-cut ruby claw set between scrolled shoulders accented with small brilliant-cut diamonds, mounted in 18ct yellow gold, shank hallmarked, *ruby approximately 6 carats, ring size N½.*  
*£600-£800*

---

267

**A LARGE CABOCHON OPAL, DIAMOND AND RUBY DRESS RING**, the cabochon opal claw set within a border of brilliant-cut diamonds to a domed ring mount pavé set with round-cut rubies, mounted in yellow precious metal, stamped '750', accompanied by a GIA Gemmological Report, *ring size R½*  
*£3000-5000*

The Gemological Institute of America Report no. 2256000578, dated 21st February 2017, confirms the cabochon opal is of natural origin, and weighs 1.51 carats, measuring 25.53mm x 18.68mm x 13.05mm.







**A 9CT GOLD CITRINE NECKLACE**, the necklace composed of oval mixed-cut citrine links with ropetwist borders, with knot design links between, mounted in 9ct gold, clasp hallmarked for Birmingham, 1980, *necklace length 41cm. £400-£600*



**AN 18CT GOLD MOUNTED FIVE ROW MULTI-GEM SET BRACELET**, composed of five articulated rows of oval garnets, amethysts, aquamarine, peridots and citrine, between baton terminals, inset with cabochons, and a ring fastener, stamped '18k', with matching half hoop earrings, together with a gilt metal and gem set collar necklace and a gilt metal snake-link chain necklace, *bracelet length 17cm. £600-£800*



**A 9CT GOLD 1950s AMETHYST SET BRACELET**, the articulated bracelet of stylised fern links each accented with a claw set round-cut amethysts, mounted in 9ct yellow gold, bearing UK import marks for 1956, *length 18cm*. £600-£800

271

**AN ENAMEL AND DIAMOND SET NOVELTY BROOCH**, modelled as a lady's hat supporting two ostrich feather plumes, mounted in yellow precious metal with polychrome enamel and accented with a line of graduated brilliant-cut diamonds, *width 41mm*. £300-500



272



**A 9CT GOLD AMETHYST SET BRACELET**, the oval mixed-cut amethysts in textured beaded link mounts, with stylised flowerhead links between, mounted in 9ct yellow gold, hallmarked, *length 19cm*. £400-£600



**A FOUR ROW CULTURED PEARL CHOKER NECKLACE**, the four uniform rows of pearls on knotted silk, to a ruby and diamond set clasp, centred with a ruby cluster, within a diamond set nine-sided mount of brilliant, old-cut and baguette-cut diamonds, necklace length approximately 34.5cm. £1,000-£1,500



**AN 18CT GOLD DIAMOND AND RUBY BAR BROOCH**, the rectangular yellow gold bar brooch claw set with a line of brilliant-cut diamonds, to a central round-cut ruby and brilliant-cut diamond flowerhead cluster, hallmarked for Edinburgh, 1987 and bearing maker's mark for Anthony John Hope, length 39mm. £200-£300



**A RUBY AND DIAMOND BAR BROOCH, BY BOODLE & DUNTHORNE**, the polished bar brooch with tapered ends set with alternate calibre-cut rubies and brilliant-cut diamonds, mounted in 18ct yellow gold, hallmarked for London, 1987, and bearing maker's mark 'B&D', length 64mm. £500-£700



**A DIAMOND AND RUBY SET PENDANT**, of flared design, outlined with twin rows of brilliant-cut diamonds, with central row of calibré rubies, with cabochon emerald highlight, (adapted to pendant), on two colour ropetwist chain, stamped to the clasp '750', pendant length 3.4cm, chain length 19cm. £600-£800

**A PAIR OF RUBY AND DIAMOND CLUSTER EARSTUDS**, the oval mixed-cut ruby and brilliant-cut diamonds claw set in white precious metal, total diamond weight 2.2 carats, cluster length 15mm. £1,200-£1,500







**AN 18CT GOLD DIAMOND SET CROSS PENDANT**, the Latin cross with trefoil terminals centred with a collet set brilliant-cut diamond, with further rubover set smaller brilliant-cut diamond accents, mount hallmarked for London, 1996 and bearing maker's mark 'RJB', *principal diamond weight 1.54 carats, pendant length including bale 64.5mm.* **£1,600-£1,800**

279



**A DIAMOND AND EMERALD SET CIRCULAR BROOCH**, the openwork octafoil brooch of entwined lattice design accented with collet set oval cabochon emeralds and brilliant and marquise-cut diamonds, mounted in yellow precious metal, *brooch diameter 53mm.* **£300-£500**

280

**AN 18CT GOLD AND DIAMOND HOOP BROOCH**, of polished whorl design, accented with channel set brilliant-cut diamonds, maker's mark for Anthony John Hope, hallmarked for Edinburgh 1998, *width 33mm.* **£500-£700**





**A SINGLE ROW CULTURED PEARL NECKLACE WITH EMERALD AND DIAMOND CLASP**, the strand of graduated cultured pearls set to an Art Deco clasp centred with a claw set oblong cabochon emerald between two square set old brilliant-cut diamonds, mounted in white precious metal with scroll engraved detail to the sides, in an unfitted gilt tooled case signed 'The C. K. Merrill Co, Jewelers, Torledo O.', necklace length 42cm, total diamond weight approximately 0.65 carats. **£900-£1,200**



**AN EMERALD, RUBY AND DIAMOND CLUSTER RING**, the central step-cut emerald in foiled closed back setting, within a surround of cushion-shaped old-cut diamonds to a spaced border of mixed-cut rubies, mounted in yellow gold, to a later shank, ring size M. **£700-£900**



**AN ANTIQUE BRAZILIAN COIN SET PENDANT**, the Joseph I of Portugal, Brazilian 6400 réis coin, 1762, minted in Rio de Janeiro, within a wreath surround with eagle terminals, beneath a Brazilian imperial crown surmount, *pendant length 81mm.*  
**£1,800-£2,000**

284

**A SOVEREIGN SET PENDANT**, the Edward VII sovereign, 1910, within an openwork pendant mount, bale stamped '750', to a spiralled curb-link chain, the S-shaped clasp bearing Chinese marks. **£550-£600**



285



**A MEDAL PENDANT**, the medal for the Exposition Universelle Wereldtentoonstelling, Brussel, in plain collet pendant mount, stamped '9ct', to plain suspensory loop, *diameter 37mm.*  
**£150-£200**

---

286

A **DIAMOND FLOWER BROOCH**, the cinquéfoil flowerhead of polished and textured petals centred with a cluster of three graduated claw set brilliant-cut diamonds, to polished stem and leaves, mounted in yellow precious metal, *total diamond weight approximately 0.45 carats, brooch length 54mm.* £400-£600



---

287



A **PAIR OF PERIDOT AND DIAMOND SET EARCLIPS**, of polished rectangular stepped form, each centred with a raised collet set oval-cut peridot, between two rubover set brilliant-cut diamonds, mounted in yellow precious metal, *length 23mm.* £400-£600

---

288

A **PAIR OF GOLD HEART EARRINGS**, BY **PIORAY**, the polished heart-shaped panel drops suspended beneath domed stud surmounts, in yellow precious metal, signed, stamped '750' and numbered '19103', *length 33mm.* £200-£300



---

289



A **PAIR OF SAPPHIRE AND DIAMOND HOOP EARRINGS**, the sprung hinged hoops of polished ropetwist form, to channel set calibre sapphire and pavé set brilliant-cut diamond heads, mounted in yellow precious metal, stamped '750', *diameter 32.5mm.* £400-£600





**AN ART DECO DIAMOND SET PANEL BROOCH**, the openwork geometric panel brooch millegrain set throughout with graduated old brilliant-cut diamonds, mounted in white precious metal, *principal diamond approximately 1.05 carats, total diamond weight approximately 6.25 carats, length 4.7cm.* £3,000-£4,000



**A KUNZITE AND DIAMOND DRESS RING**, the oval mixed-cut kunzite claw set between brilliant-cut diamond set shoulders, mounted in polished white precious metal, stamped '750', *kunzite estimated weight approximately 16 carats, ring size R.* £600-800

**292 A DIAMOND CLUSTER RING**, the 6.31 carat step-cut diamond claw set within a cluster surround of smaller marquise-cut diamonds, mounted in white precious metal, to wirework shoulders and shank, accompanied by a GCS diamond report, *total weight of marquise-cut diamonds approximately 1.5 carats, ring size U.* £26,000-£30,000

The Gemmological Certification Services report number 79178-41, dated 15th October 2018, confirms the emerald-cut diamond weight 6.31 carats, clarity of VS11 and colour of L.



- 
- 293** A LATE VICTORIAN SERPENT STICKPIN, the serpent with polished body, textured head and collet set rose-cut diamond eyes, coiled around a claw and collet set round cabochon garnet. £200-£240



- 
- 294** A 19TH CENTURY GEM SET SERPENT RING, modelled as a coiled serpent, the textured head set with a mixed-cut ruby, rose-cut diamonds and rose-cut emerald eyes, mounted in yellow gold, ring size S. £300-£500



- 
- 295** AN 18CT WHITE AND 'CINNAMON' DIAMOND SET SERPENT RING, the ring modelled as a coiled serpent, the front pavé set with bands of brilliant-cut white and cinnamon diamonds, the cinnamon stones set against a blackened ground, the setting in white precious metal, stamped '750' and indistinctly numbered, ring size R. £1200-1500





AN EARLY VICTORIAN DIAMOND AND ENAMEL SERPENT NECKLACE, the graduated snake-link chain body to a blue enamelled serpent head with pear-shaped cabochon ruby eyes and rose-cut diamond set eyebrows, to a central shaped cluster of old brilliant and pear-cut diamonds, mounted in gold and silver, *necklace length 35.5cm.*

£2,600-£3,600





**AN EARLY 20TH CENTURY STYLE DIAMOND PENDANT**, centred with an oval mother-o'-pearl panel depicting Our Lady and the infant Christ, set with brilliant and rose-cut diamonds, in pierced millegrain edged setting, on diamond set bale hallmarked for 18ct white gold, *length 5.7cm.* **£400-£600**

298



**A 9CT GOLD AND DIAMOND HALF HOOP RING**, the narrow band channel set to the front with brilliant-cut diamonds, mounted in 9ct white gold, shank hallmarked and bearing maker's mark 'HAZ', *ring size L.* **£100-£150**

299

**A SMALL DIAMOND CROSSOVER BAND RING**, one arm channel set with alternate graduated baguette and brilliant-cut diamonds, the other arm with baguette-cut diamonds, mounted in white precious metal, stamped '750', *ring size L.* **£200-£300**



300



**A THREE STONE SAPPHIRE AND DIAMOND RING**, the central oval mixed-cut sapphire claw set between two old-cut diamonds, to white precious metal stamped 'plat' for platinum, *total diamond weight approximately 0.80 carats, ring size R.* **£600-£800**



**AN EDWARDIAN SAPPHIRE AND DIAMOND BAR BROOCH**, the oval mixed-cut sapphire claw set to the centre of an millegrained openwork shaped tapered brooch set throughout with graduated brilliant and single-cut diamonds, mounted in white precious metal, *length 51mm*. £1,000-£1,500

302

**AN ART DECO STYLE DIAMOND AND SAPPHIRE RING**, the geometric pierced and millegrained hexagonal panel set with brilliant-cut diamonds, to central principal brilliant-cut diamond in a surround of scissor-cut sapphires, mounted in 18ct white gold, shank bearing partial hallmark and maker's mark 'J.C.', *ring size P½*. £800-£1,000



303



**AN ART DECO STYLE BLUE PASTE AND DIAMOND RING**, the octagonal step-cut blue paste stone claw set within a millegrained surround of rose-cut diamonds, to similarly set stepped shoulders, mounted in yellow and white precious metal, shank stamped '18ct', *ring size L*. £400-£600

304

**AN AMERICAN ART DECO STYLE SAPPHIRE AND DIAMOND RING**, the pierced geometric bezel centred with three brilliant-cut diamonds, with further smaller brilliant-cut diamonds and channel set calibr -cut sapphire accents, mounted in white precious metal, shank stamped 'Dreicer', '14K' and 'D12', *ring size K*. £600-£800





**A DIAMOND AND WHITE GOLD NECKLACE**, the V-shaped centrepiece set with graduated brilliant-cut diamonds, with central claw set brilliant-cut diamond drop, mounted in white precious metal to a flattened ropetwist back chain, clasp stamped '750', necklace length 44cm, principal diamond approximately 0.35 carats. £500-£700



**A PAIR OF DIAMOND AND ENAMEL DROP EARPENDANTS**, the cushion-shaped old-cut diamond drops collet set within black enamel surrounds, suspended on articulated millegained single-cut diamond set surmounts, to screw back stud fittings, mounted in white precious metal, principal diamonds approximately 0.85 and 0.9 carats respectively, earpendant length 33mm. £2,400-£2,600



- 307** AN ALHAMBRA MOTHER-O'-PEARL BRACELET, BY VAN CLEEF & ARPELS, the quatrefoil mother-o'-pearl links in beaded 18ct gold mounts with chain connections between, clasp bearing maker's mark, stamped '750' and numbered 'JE311536', cased, with Certificate of Authenticity, dated 7th May 2015, bracelet length 17cm. £2,200-£2,600



- 308** AN ALHAMBRA MOTHER-O'-PEARL NECKLACE, BY VAN CLEEF & ARPELS, the single quatrefoil in beaded 18ct gold mount on fine belcher-link chain, maker's mark and stamped '750', numbered 'JE035690', cased, chain length 42cm. £800-£1,000



---

309



A 19TH CENTURY MARQUISE-SHAPED SAPPHIRE AND DIAMOND CLUSTER RING, the marquise-shaped cluster bezel composed of a line of five graduated mixed-cut sapphires within a surround of old brilliant-cut diamonds, mounted in yellow gold with scrolled shoulders, *ring size M*. £600-£800

1

---

310

A DIAMOND FULL ETERNITY RING, composed of individually claw set brilliant-cut diamonds, mounted in platinum, bearing partial hallmark, *ring size R*, total diamond weight approximately 2.5 carats. £600-£800



---

311

A THREE STONE DIAMOND RING, the brilliant-cut diamonds in claw mounted, in 18ct white gold setting, total diamond weight approximately 1.7 carats, shank with inset sizer beads, *ring size approximately J*. £1,500-£1,800



312



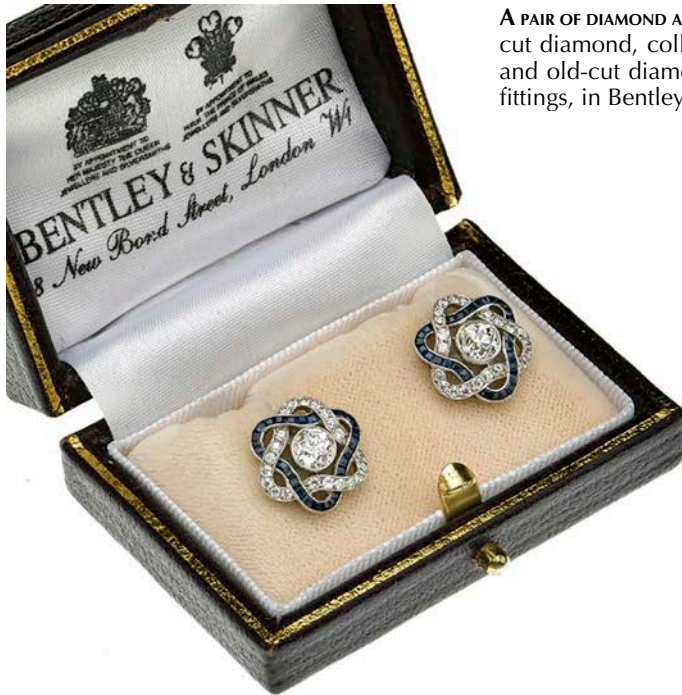
A MARQUISE DIAMOND AND CABOCHON BLUE GLASS SET DRESS RING, the oval cabochon blue glass stone between trios of marquise-cut diamonds, mounted in yellow precious metal, stamped '18', ring size O. £300-£500

313

A SINGLE STONE DIAMOND RING, the brilliant-cut diamond, weighing 1.01 carats, D colour and IF clarity, claw set within an 18ct white gold setting, shank hallmarked, with a GIA certificate numbered GIA-16141416, dated 4th May 2007, ring size P. £6,500-£8,500



314



A PAIR OF DIAMOND AND SAPPHIRE SET CLUSTER EARSTUDS, each centred with an old-cut diamond, collet set, within an entwined border of calibré sapphires and old-cut diamonds, white precious metal mounted, on screw thread fittings, in Bentley & Skinner case, *diameter 13.5mm.* £900-£1,200

315

A BLUE ENAMEL AND DIAMOND SET STARFISH BROOCH, slightly domed, the five arms each set with a line of graduated single-cut diamonds within a broad blue enamel border, mounted in yellow precious metal, *width 45mm.* £300-£400



316

A DIAMOND RIVIÈRE NECKLACE, SIGNED MOBOCO, composed of 131 slightly graduated brilliant-cut diamonds in linked claw settings, to a small hinged panel clasp set with brilliant and baguette-cut diamonds, clasp stamped '10% IRID PT' for platinum and '750', signed and bearing maker's mark 'MB', in signed Moboco green leather case, *total diamond weight approximately 22.4 carats, necklace length 50cm.* £26,000-£30,000

MOBOCO are jewellers from Newport Beach, Florida, who specialise in fine diamond jewellery.

The necklace is accompanied by a copy of the 'Certificate of Appraisal' from Moboco, dated 8 March 1996, Report No: MB7801, estimating the gradings of the 131 diamonds as F colour and VVS1 clarity, the weights for the individual diamonds ranging from approximately 0.30 to 0.10 carats. The diamond weight of the clasp is estimated at 0.54 carats.





317



**AN ANTIQUE AMBER BEAD NECKLACE**, composed of graduated, slightly domed amber disc beads, with a small yellow precious metal beaded cluster links between, to an S-shaped clasp, *necklace length 50cm*. £400-600

318



**A VICTORIAN DIAMOND SET BAR BROOCH AND WEDDING RING**, the bar brooch composed of five roundals with applied bead and wirework borders, alternately centred with claw set old brilliant-cut diamonds or round-cut citrines, mounted in yellow gold, reverse inscribed 'Anna from James, Nov 18th 1884', together with a wedding band, interior inscribed for the same couple, *bar brooch length 49mm*. £400-£600

319

**A QUANTITY OF ASSORTED JEWELLERY BOXES**, mostly modern.

£40-£60



# Ancient Jewellery and Antiquities





## Ancient Jewellery and Antiquities

320



A BYZANTINE 8TH-9TH CENTURY HINGED AND LOOPED BRONZE AND NIELLO INLAID CRUCIFORM RELIQUARY PENDANT, depicting Christ on the cross to the front and Mary to the reverse, length 5.75cm. £200-£260

From a European collection.

321



A PAIR OF KRAFT PROFILIERTE TYPE BRONZE BROOCHES, 1ST CENTURY AD, decorated with red coral enamel on the head and foot, with ribbing decoration, length 9cm. £80-£100

From a European collection.



**A PAIR OF LATE 5TH CENTURY GOTHIC RADIATE HEAD BRONZE BROOCHES**, the D-shaped head plate decorated with cross hatching with four radiating eagle heads with central beast head, highly arched bow with a lozenge shaped foot plate with S-scroll decoration, *both repaired and missing foot lobes, length 14cm.* £400-£500  
From a European collection.



323



**A GROUP OF ANGLO-SAXON ITEMS, 6TH-11TH CENTURY**, including a button brooch, an 8th century equal armed brooch (Ansate), two stirrup mounts, a silver gilt strap terminal, a 9th century openwork strap junction with silver inlay and with badger head in the centre, and a 6th century small long brooch. All found in Sussex with relevant paperwork. **£160-£180**

324



**A SMALL GROUP OF ROMAN AND MEDIEVAL ARTEFACTS**, the bronze artefacts including a Roman disc brooch with green enamel, a nail cleaner, an awl, a Medieval brass pilgrim's badge with a figure of a bishop, two 14th century seal matrices, the first with a central design of a flower, the second with facing busts, together with later items comprising a 16th century silver roundel, engraved with IHS with sunray border, a silver gilt pin with eagle terminal, another with a thistle terminal and a bronze prosthetic nose. All found in Sussex, with paperwork. Mostly fine. **£80-£100**

325



**AN ANGLO SAXON LARGE GILT BRONZE SWORD POMMEL OR CAP, 9TH CENTURY AD**, ornamented with a central dome in the outline of a cross, chip carved with a scroll pattern on the sides with smaller indented crosses at each end, V-punched decoration along each side, pierced at each end for attachment to the sword hilt, 76mm long x 19mm wide x 13mm high. Found in Itford, Sussex in 1984. Very fine.

£400-£500

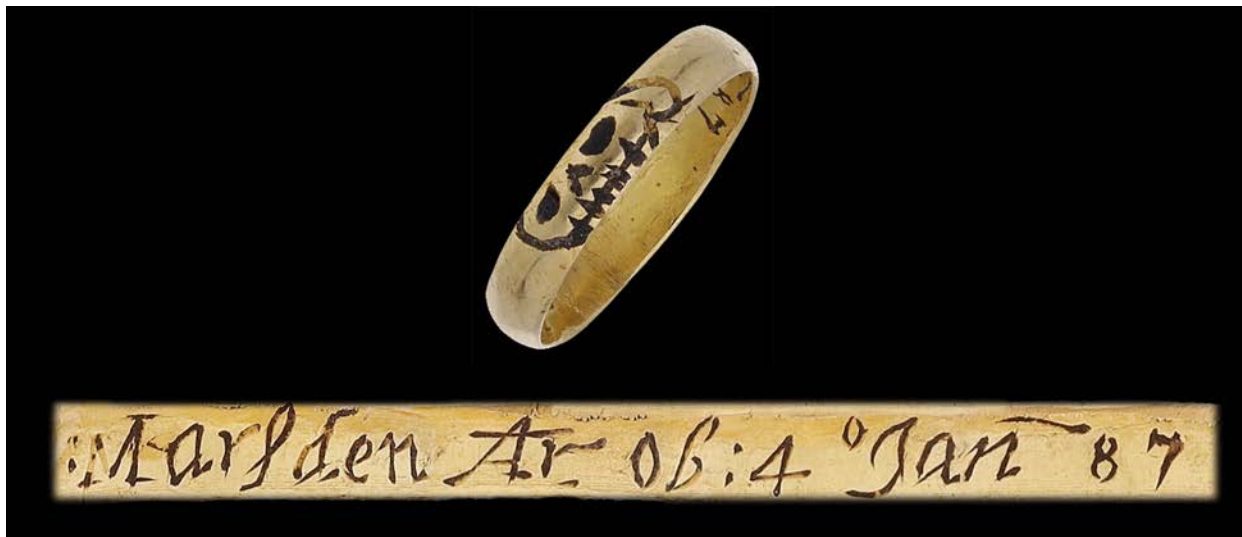
326



**A GROUP OF THREE 15TH CENTURY LEAD PILGRIMS' AMPULLAE**, all of flask type with looped handles at the sides, the first with scallop shell decoration and crowned W (Walsingham), the second with floral motif and cross hatching, the third with scallop shell design and shield divided into quarters. All intact and found at Itford, Sussex. All very fine.

£100-£150

327



**A 17TH CENTURY MEMENTO MORI RING, FOR HENRY MARSDEN**, the yellow gold band with a stylised skull motif to the exterior, bearing traces of black enamel, the interior inscribed 'Marsden Ar. Ob:4 Jan 87', also with traces of black enamel, *ring size L*.  
**£1500-2000**

**Henry Marsden (1625-1688)** was born in Clitheroe, the son of the headmaster of the local grammar school. He was educated at Staple Inn and Gray's Inn, as an attorney and during the Commonwealth period lived at Gisburn in Craven. By 1654 Marsden had married Jennet Mort, the daughter of Adam Mort, the mayor of Preston, who was killed when the town was taken by parliamentary forces in 1643.

Marsden was Justice of the Peace for West Yorkshire from 1667, for Lancashire from 1676 and Gloucestershire and Camarthenshire from 1680. He was deputy Lieutenant of Lancashire from 1680 and was elected as MP for Clitheroe in 1680 and 1681. One of his daughters married Ambrose Pudsay, who also later became the MP for Clitheroe.

In 1674 Marsden brought the Wemmington Estate in Lonsdale. He died on 4th January 1688, at the age of 62 and is buried at Gisburn.

In 1752 England, Wales and Ireland adopted the Gregorian calendar, replacing the Julian calendar. Prior to this the civil/legal year began on Lady Day, 25th March. Contemporary texts record dates between 1st January and 25th March as belonging to the previous year. This is why a date of death recorded at the time as 4th January 1687 would now be recorded as 4th January 1688.

328



**AN 18TH CENTURY MEMENTO MORI MOURNING RING**, the scrolled band with black enamel detail and gold lettering (rubbed) to an octagonal bezel of faceted glass over a painted skull motif, in a gadrooned closed back collet setting, *ring size P1/2*.  
**£400-£600**



**A MEDIEVAL SILVER VESICA MATRIX SEAL**, the marquis-shaped silver seal bearing the motto 'SERVOSECRETVMDOMINIMEX', centrally inset with a 1st c. AD/1st c. BC carnelian seal depicting the bust of Hercules in profile, wearing a laurel headdress and with lion pelt around his shoulders, with pendant mount to the reverse, *length 22mm, width 20mm.*

£4,600-£6,000

This piece has been through the treasure process and been disclaimed by the crown. It is recorded on the Portable Antiquities Scheme database, ref: DOR-952C7E.

Historically, the majority of seals have been circular in design, generally comprising a graphic emblem surrounded by a text (the legend) around the perimeter. In the Middle Ages it became customary for the seals of women and of high ranking ecclesiastics to adopt a vesica (marquise) shape. The legend on this seal: '*Servo secretum dominimex*' translates as '*I keep secrets*'. This, combined with the use of a classical gemstone seal, indicate that this was a *sigillum secretum*, a special seal used specifically for private correspondence, as opposed to an official seal, which would have typically utilised a heraldic device (relating to the owner).

Martin Henig in his essay '*The Re-use and Copying of Ancient Intaglios set in Medieval Personal Seals, mainly found in England: An aspect of the Renaissance of the 12th Century*' notes the great discrimination and connoisseurship employed by members of the élite in selecting ancient gems for their secreta.

*"In the High Middle Ages, between the 12th and 14th centuries, ancient gems were frequently re-set for use in personal seal-matrices (secreta) in order to serve as signets. The fashion, for the display of jewels in general, including ancient gems, was continuous throughout the Middle Ages, but gem-seal usage reached its height of popularity during the second half of the 12th century. Consequently, it may be seen as one small aspect of what it is still convenient to call the '12th century Renaissance', with its intellectual ferment and enhanced interest in the literature and art of Rome and the Classical world. Gem-set seals thereafter continued to be employed well beyond the end of the century, although, in England at least, not much beyond the earlier 14th century."*

In his introduction to the 2007 exhibition '*Good Impressions: Image and Authority in Medieval Seals*', James Robinson comments:

*"The use of silver for the manufacture of seal-dies was not restricted to royalty. Highly placed nobles were equally likely to use silver as an expression of their status. From the 1140s ancient Greek and Roman intaglios were set into gold or silver surrounds for use as counterseals by the wealthy and well-educated. They signified both taste and learning and presented the additional benefit of not being easy to imitate. The Latin legends that surround them varied from the basic: *sigillum secreti* (Secret seal) to the instructive: *ponite literas istas insigl silv secr* (Place your letters under a secret seal)."*



330



**A POST MEDIEVAL SILVER HERALDIC BADGE**, the embossed silver badge of quatrefoil outline, with central lion rampant motif, length 32mm. £200-£300

The lion is a common charge in heraldry. It traditionally symbolises courage, nobility, royalty, strength, stateliness and valour, because historically it has been regarded as the "king of beasts".

331



**A 15TH-16TH CENTURY GARNET SET GOLD RING**, the table-cut garnet in four lobed setting, between stylised foliate engraved shoulders, ring size P. £1,000-£1,500

This piece was inherited by the vendor from her father, who purchased his collection throughout the 1970s and early 1980s.

# Objects of Vertu



## Objects of Vertu

332



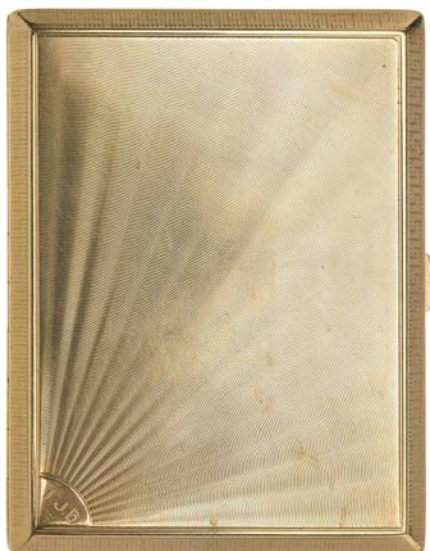
**A BUFF COLOURED SHAGREEN AND LEATHER CLUTCH BAG**, of envelope design, with pink raw silk interior, and integral purse, *length 22cm.* **£50-£70**

x333

**A DIAMOND SET MONEY CLIP**, the yellow precious metal clip with textured finish, polished borders and three colour stripe detail, accented with a raised collet set brilliant-cut diamond, stamped '750', *length 5.6cm, diamond weight approximately 0.08 carats.* **£200-300**



334



**A 9CT GOLD CIGARETTE CASE**, the slim hinged rectangular case with engine-turned engraved sun ray and Greek key decoration, hallmarked for Birmingham, 1927 to the interior and initialled to external corner, *dimensions 10.5cm x 8cm.* **£1200-1300**





- 335** A NOVELTY RETRACTABLE MECHANICAL PENCIL/RULE, the mechanical pencil with square section extending body marked for use as a 12" rule, with further striped decoration, initialled and stamped '14k' and 'Pat. No. 68281', length unextended 14cm. £400-600



- 336** A 15CT GOLD VESTA CASE, BY WALTER THORNHILL, LONDON, the plain polished vesta with hinged lid and strike to base, the edge engraved '7.10.75', the inside rim hallmarked for London, 1884, bearing maker's mark and signed 'Thornhill, Bond Street, London', dimensions 38mm x 25.5mm. £100-£150

- 337** A 9CT GOLD AND SAPPHIRE BOX, BY CARTIER, 1940, the hinged lidded rectangular box with channel set calibr -cut sapphire thumbpiece, push button release, hallmarked for London, 1940, signed 'Cartier, London' and bearing maker's mark 'JC', in original fitted gilt tooled signed red leather case, dimensions 82mm x 62mm x 17.5mm. £2,800-£3,200





338



**A VICTORIAN RECTANGULAR ENAMELLED VESTA CASE BY SAMPSON MORDAN & Co**, the front enamelled with a sailing boat in choppy waters, with further vessels to the background, with hinged cover and strike to the opposing end, bearing maker's mark and hallmarked for London, 1893, length 5.6cm x 3.1cm. **£600-800**

339



**A GEORGE IV SILVER ADMIRALTY OAR TIPSTAFF**, the cylindrical barrel with incised diagonal cross hatched decoration, beneath a double row milled collar, above a plain slightly flared shaft engraved to one side with the Royal Coat of arms, with fouled anchor of the Admiralty below, between vertical engraved bands of cross detail to each side, the reverse engraved with the arms of the City of London, bearing maker's mark 'GK', possibly for George Knight, London, 1821, beneath a crown surmount, with detachable orb above, the base of the tipstaff having screw off cover, enclosing a detachable silver oar (unmarked), length 11.5cm, with oar 17.7cm. **£2000-3000**

Admiralty Tipstaves containing an oar were part of the ceremonial uniform of representatives of the Admiralty or the High Court of Admiralty. Engraved with the symbol of the fouled anchor, to show 'authority over the water', an official in possession of an admiralty oar was granted extended powers to board, search and in some instances seize vessels that came within their area of jurisdiction. Titles of those permitted to carry them would have included harbour masters, portreeves, water bailiffs and constables.

Admiralty tipstaves generally come in two varieties: the first style modelled in the form of an oar with a crown, the second style, as the example above, of the form where the barrel unscrews to reveal an oar contained within. The orb on the crown can also be removed to allow the pieces to be swapped over and the oar screwed into a vertical position.

Rare on the open market, most examples of Admiralty tipstaves are held in museums or large collections. A number of fine examples are held by the Worshipful Company of Goldsmiths; another silver example is held at the Museum of London Docklands, (Ref No NN12197), hallmarked for 1766, and described as a being used by a 'high ranking water bailiff' and a further example, a parcel-gilt Admiralty oar mace, by maker Crespian Fuller, London 1819, is held in the collection of the National Maritime Museum, (Object ID PLT0704).

Oar Maces of Admiralty - National Maritime Museum, 1966

Journal of maritime law and commerce by J Sweeney - 2007

See: Cooke, Alan C., *Truncheons: An unequal match*, Biddles, Norfolk, 2014, page 109.



340



**AN EARLY 20TH CENTURY STYLE NEPHRITE, ENAMELED AND SILVER MOUNTED PAPER KNIFE/LETTER OPENER**, comprising a nephrite slim blade beneath anthemion and C-scroll decorated mount, below cylindrical nephrite barrel handle, with applied diamond and cabochon ruby set ribbon and swag detail, beneath green guilloché enamelled dome and crowned double headed Imperial eagle finial, bearing *pseudo* hallmarks for Fabergé and *pseudo* initials AH for workmaster August Wilhelm Holmström, bearing stamped marks for 88 zolotniks standard, (*nephrite untested for treatments*), length 25.5cm.

£500-800

341



**A TRAVEL THERMOMETER**, the small mercury thermometer in a white metal hinged case/stand, with mosque detail to the front, inside rim stamped '800', length 97mm.

£50-£70

342



A VICTORIAN SILVER HIP FLASK, of oval form, with fitted pull off cup and screw on lid, both with scroll engraved detail, hallmarked for Sheffield, 1862, and bearing maker's mark 'R&B', length 14.5cm. £200-£260

343

A CONTINENTAL SCENT BOTTLE, the blue overlaid glass perfume bottle with white precious metal scroll embossed hinged lid, with glass stopper (possibly replaced), length 97mm. £160-£200



344



A SILVER HIP FLASK, of plain polished rectangular form, with fitted pull off cup, the hinged screw on lid monogrammed, the flask hallmarked for Birmingham, 1915, bearing maker's mark 'W N Ltd' and stamped 'Rd No 649007', length 10.3cm. £140-£180



345



**A 19TH CENTURY SILVER AND SILVER GILT MOUNTED FRETWORK PURSE**, the front applied with a pierced decorated panel in the chinoiserie taste against a red ground, with central cartouche enclosing a glazed painted coastal scene with colonnade, with figures promenading, the reverse with similarly decorated panel depicting a hunting scene and Oriental figures amidst C-scrolls and foliage, leather mounted and opening to reveal rose-coloured taffeta interior, *length 8.5cm, width 5.3cm.* **£150-£200**

346



**A SILVER AND ENAMEL POWDER COMPACT**, the hinged circular compact with engine-turned decoration enclosing mirror, the front with hand painted detail of a vase of flowers against a cream guilloché enamel ground, hallmarked for Birmingham, 1939, *diameter 77mm.* **£60-£80**

x 347



**AN EARLY 20TH CENTURY RUSSIAN CLOISONNÉ ENAMEL BOX**, of marquis outline, the box enamelled in pastel shades of pink, blue, purple and white against a green ground, within an outer border, the sides with repeating lozenge and roundel motifs against a maroon ground, the base with stamped Kokoshnik mark facing right (for 1908-1924) with triangular mark for Moscow regional assay office and maker's mark for V M Ashmarin, *length 7cm.* **£800-£1,000**

348

**A LATE 19TH CENTURY SILK AND GEM SET FAN**, the gold guard sticks of pierced interlaced design, with black and white enamel detail and highlights of cabochon turquoise, rose-cut diamonds and pearls, the pleated silk hand painted to front and back with colourful floral sprays, above pierced ivory sticks, (one repaired), in fitted maroon velvet case, the interior signed Sackermann Heissenberg & Co, Frankfurt, (slight tear to silk on reverse), *length of guard sticks 27.7cm.* **£1,200-£1,500**

Please note ivory is covered by CITES legislation and may be subject to trade and import/export restrictions.







349



**A LATE VICTORIAN SILVER FOUR SECTION CIGAR CASE**, scroll and foliate engraved throughout, the interior gilt and hallmarked for Birmingham, 1899 and bearing maker's mark 'J G', the front inscribed 'A. Jerdan, Jany 1/1901', length 13cm. £220-£240

350



**A SILVER THREE SECTION CIGAR CASE, BY HILLIARD & THOMASON**, the hinged case with foliate engraved decoration and gilt interior, hallmarked for Birmingham, 1900, and bearing maker's mark, length 12.5cm. £160-£200

351



**A LATE VICTORIAN SILVER TWO SECTION CIGAR CASE AND SMALL CIGARETTE CASE**, the plain polished cigar case with gilt interior, hallmarked for Birmingham, 1907 and bearing maker's mark 'J G' and numbered '334', the rectangular cigarette case scroll engraved throughout and initialled, hallmarked, first case length 13cm. £120-£140

352



A VICTORIAN SILVER RECTANGULAR TABLE SNUFF BOX, the box with engine-turned decoration throughout, the hinged lid with scrolling foliate and floral border, and similarly decorated thumbpiece, raised on ball feet, bearing maker's mark probably for maker Edward Edwards II, and hallmarked for London, 1846, length 10cm x width 6.5cm x height 3.2cm.

£300-400

353



A CONTINENTAL MODERN SILVER RECTANGULAR CIGARETTE CASE, with hinged lid and beaded rims, the inside of the lid initialled, bearing assay marks to the base and maker's mark 'I.H.S', dimensions 14.8mm x 9.6mm x 6.5cm.

£220-£260

354



A CONTINENTAL MODERN SILVER CIRCULAR HINGED LIDDED BOX, with beaded rims, initialled to the inside of the lid, bearing assay marks to the base, diameter 12cm.

£140-£160



355



A VICTORIAN SILVER CARD CASE, engraved throughout with scrolling foliate, the reverse with central panel bearing presentation inscription, the interior with original red silk lining, hallmarked for Birmingham, 1886, maker's mark probably for Colen Cheshire, length 10cm. £120-£160

356

A VICTORIAN AESTHETIC MOVEMENT SILVER CARD CASE, BY HILLIARD & THOMASON, with engraved decoration of birds and butterflies amid bamboo and other foliage, to a geometric border, hallmarked for Birmingham, 1905 and bearing maker's mark, length 9.8cm. £140-£180



357



A VICTORIAN SILVER CARD CASE, BY NATHANIEL MILLS, of rectangular hinged lidded form, with scroll and engine-turned decoration with central later applied gold escutcheon bearing small presentation inscription, hallmarked for Birmingham, 1850 and bearing maker's mark 'N M', length 10cm. £120-£150

358



**A CHINESE CARVED TORTOISESHELL SNUFF BOX**, the hinged lid carved in high relief with a scene of figures amidst trees and dwellings, the side decorated with chasing dragons, the base carved in low relief with a figural scene, *dimensions 83mm x 58mm x 22mm.* **£100-£150**

359

**A CHINESE EXPORT SILVER CARD CASE, BY WANG HING**, with pull off cover, the front embossed in high relief with figures, beneath a spreading tree, with central vacant shield-shaped cartouche, the reverse with bamboo sprigs and four roundels incorporating Chinese characters, the sides of the case decorated with prunus blossom, stamped with maker's mark 'WH', and numbers '90', *length 9.7cm.* **£200-£300**

The four Chinese characters to the reverse of the card case are: Ahu, Bao, Ping and An: meaning *Bamboo, Requite, Calm and Peaceful.*



360



**A VICTORIAN SILVER RECTANGULAR CARD CASE**, of shaped outline and with hinged lid, the front engraved with an image of the Burns Monument, Edinburgh, within oval cartouche, the case decorated throughout with quatrafoil and scrolls in repeating grid design, monogrammed to the reverse, by makers Aston & Son (Thomas Aston and William Aston), Birmingham 1857, in original red leatherette fitted case, *length 10cm x width 7cm.* **£500-£600**





**A GEM SET EAGLE PLAQUE BY DIEGO PERCOSSI PAPI**, the crowned standing eagle formed from a cut-out gilt metal and silvered mount, decorated in polychrome enamels, the body formed by a turquoise matrix oval panel, and set with vari-gem stones including cabochon moonstones, freshwater pearls, emeralds, sapphires and rubies, and channel set hardstone micro-mosaic detail, stamped to the reverse 'PERCOSSI PAPI', length 27.5cm. £600-£800

**Percossi Papi** are an Italian family run jewellers. The founder Diego, started creating his jewels in 1968 in a small atelier near the Pantheon in the heart of Rome, working in the tradition of enamels and inspired by Renaissance design, to create his distinctive and colourful style. His sons Valeria and Giuliano now continue the business and have expanded into jewellery design for films.

This piece was designed by Diego and given as a gift to the vendor.

362



**A VICTORIAN SILVER AND TORTOISESHELL NOVELTY TABLE VESTA, BY THOMAS JOHNSON II, 1881**, realistically modelled as a tortoise, the carved shell hinged to reveal inner vesta compartment and strike to one side, stamped to the base 'W. Thornhill & Co, 144 New Bond Street', hallmarked for London, 1881 and with maker's mark 'TJ' for Thomas Johnson, (cracks to shell), length 85mm. **£400-500**

363



**A SILVER OWL PROPELLING PENCIL BY SAMPSON MORDAN & Co**, the owl realistically modelled with textured feathers, with yellow and brown glass bead eyes, seated on a bar, the pencil stamped 'S Mordan & Co', and 'J & G Beasley', with ring suspensory loop, not hallmarked, over all length with pencil extended 7cm. **£100-£150**

364

**A FRENCH NOVELTY PARROT'S HEAD HANDLED PARASOL**, the terminal modelled in two colour purple and green stained shagreen, with carved ivory beak and red and black glass eyes, mounted to a fruitwood stem, between gilt banded collars, the brown silk parasol (silk damaged) with ivory tips and ivory button, to fruitwood base, signed 'Lamaud, 28 Rue Vignon', over all length 63.5cm, head length 5.6cm. **£400-£600**

Please note ivory is covered by CITES legislation and may be subject to trade and import/export restrictions.





365



AN 18TH CENTURY GILT ETUI, of waisted rococo form, the hinged cover opening to reveal a fitted interior, enclosing a pair of steel folding scissors, an ivory note slide, a folding fruit knife, a gilt snuff spoon, a gilt bodkin, a gilt toothpick/ear cleaner and a gilt pencil holder, length 10.3gm. £200-£300

Please note ivory is covered by CITES legislation and may be subject to trade and import/export restrictions.

366



A CONTINENTAL LATE 19TH CENTURY SILVER ETUI, modelled in the form of a book, the front and back covers repoussé decorated with central figural cartouches within C-scroll borders, between a reeded chevron spine, the top with slide cover opening to reveal internal fittings, comprising a pair of scissors, an ivory note slide, a propelling pencil by S. Mordan & Co and a mother-o'-pearl cased fruit knife, outer case unmarked, length 8.3cm. £100-£200

Please note ivory is covered by CITES legislation and may be subject to trade and import/export restrictions.

- 367** A MID 18TH CENTURY GOLD SCENT BOTTLE/SEAL, CIRCA 1750s, the vase-shaped flask with tapering neck, finely chased with shell and scale detail, each side decorated with scenes of frolicking putti, within shell decorated cartouche border, the sides with scallop shells and flowerheads, the screw cap enclosing gold stopper, the base inset with oval bloodstone intaglio carved with Cupid holding two hearts, beneath the French motto 'UNIS A TOUJOURS' translating as '*united always*', unmarked, length 5.8cm. £1,800-£2,200

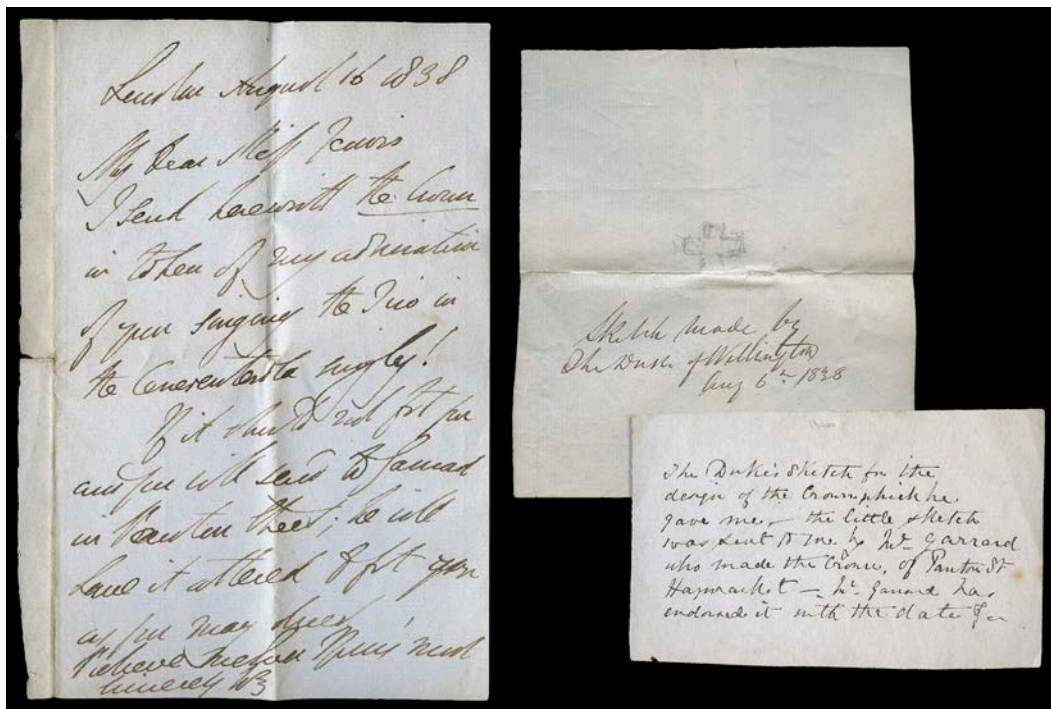


368



**A FRENCH EARLY 20TH CENTURY SILVER, AMETHYST AND PEARL SET CIRCULAR BOX**, the lid with engraved decoration, green enamel, half seed pearls centred with a cabochon amethyst, gilt interior bearing French assay marks, diameter 47mm. **£120-£160**

369



**DUKE OF WELLINGTON INTEREST: ASSORTED HAND WRITTEN LETTERS AND A PENCIL SKETCH**, including a letter written by the Duke of Wellington to the Hon Mary Anne Jervis, dated 16th August 1838, referring to the gift of a coronet commissioned by the Duke himself, made by Messrs Garrard, and given as a personal gift. **(This lot relates to the silver gilt coronet previously sold at Dix Noonan Webb. (See: lot 250, sale on 27th March 2018 - image below). £100-£200**

These papers have subsequently come to light by the vendor of the coronet.

The first letter reads:

'Rec.....16 1838 My dear Mary Jervis,

I send herewith the Crown in token of my admiration of your singing the Trio in the Cenerentola regally! If it should not fit you will send to Garrard in Pantons Street, he will have it altered to fit you as you may desire .... sincerely W3'. Accompanied by a hand written envelope addressed to: 'The Hon.ble Mary Jervis, ... St James' Street', with the Duke's wax seal to the reverse.

Also included is a small pencil sketch of the outline of the crown drawn by the Duke himself, annotated below: 'Sketch made by the Duke of Wellington Aug 6th 1838' with a further hand written note (by Mary Anne Jervis) reading: 'The Duke's sketch for the design of the Crown which he gave me - the little sketch was sent to me by Mr Garrard who made the Crown, of Pantons Street, Haymarket - Mr Garrard has endorsed it with the date of it'.

A further hand written note dated July 1874 (presumably originally accompanying the coronet itself) was written by Mary Anne Jervis, (who married the Hon George Weld-Forester in 1862) reading: 'This gold crown was given to me when the Hon M A Jervis by the great Duke of Wellington, manufactured under his direction by Messrs Garrard, Haymarket, the Duke drew this little design himself, a very rough little affection on a scrap of paper which Messrs Garrard sent me.....' signed 'M A Forester July 1874'.





# Watches





## Watches

370

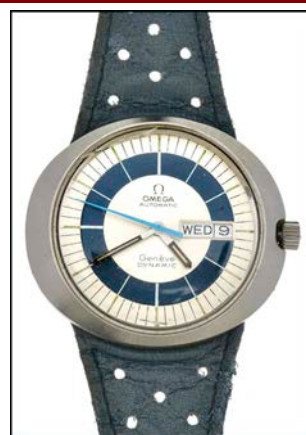


A JAEGER ALARM CLOCK IN A SILVER HORSESHOE MOUNT, BY ASPREY, 1950s, the signed circular cream dial with applied gilt Arabic numerals and baton hour markers, luminous dagger hands and central rotating dial to set alarm, manual wind movement, in a silver easel back mount modelled as a horseshoe with gilt nails, hallmarked for London, 1956, and bearing Asprey & Co Ltd maker's mark, dial diameter 43mm. £500-£700

371

A STAINLESS STEEL AUTOMATIC GENÈVE DYNAMIC WATCH, BY OMEGA, the signed circular dial with plain blue chapter ring and outer baton seconds scale, day and date apertures at 3 o'clock and bright blue centre sweep seconds hand, automatic movement, oval brushed steel case to fitted pierced blue leather strap, with signed clasp, dial diameter 32.5mm.

£200-£30



372



AN AR2434 RENATO STAINLESS STEEL GENTLEMAN'S CHRONOGRAPH WRISTWATCH, BY EMPORIO ARMANI, the signed black dial with baton hour markers, date aperture at 4-5 o'clock and three subsidiary dials, quartz movement, in signed stainless steel case, numbered 'AR2434 111306', with push chronograph buttons to the band, to a brushed and polished track-link bracelet strap, dial diameter 37mm. £50-£70

373



AN 18CT GOLD, DIAMOND AND MOTHER-O'-PEARL 'DELIRIUM' LADY'S WRISTWATCH, BY **CONCORD**, the rectangular dial centred with a signed circular blue mother o' pearl panel within a white precious metal chapter ring with black Roman numerals, within square surround pavé set with small brilliant-cut diamonds, to a black border, the reverse bearing European convention marks and numbered '81/60,90,669 DM 952934', with pavé set brilliant-cut diamond bezel and shoulders, to a black 'crocodile' leather strap, signed 'Chopard', watch head length 27mm. £300-500

374



A GENTLEMAN'S STAINLESS STEEL WRISTWATCH, BY **OMEGA**, the signed silvered dial with applied black baton hour markers and centre sweep second hand, jewelled manual wind 1/601 movement signed and numbered '32152961', in signed brushed steel case, to later black leather strap, dial diameter 31mm. £50-£70

375



A LADY'S 18CT GOLD SAHIDA AUTOMATIC WRISTWATCH, BY **ETERNA**, the signed silvered circular dial with baton hour markers, signed jewelled 'Eternamatic' movement, case signed and bearing Swiss marks and UK import marks, to integral mesh-link bracelet strap, clasp bearing import marks, wristwatch length 17cm. £800-£1,200

376



A DIAMOND SET COCKTAIL WATCH, the small signed silvered dial with black baton hour markers, jewelled movement, the bezel and foliate shoulder set throughout with baguette, brilliant and single-cut diamonds, case stamped 'platinum', to a slightly graduated bracelet of brilliant-cut diamond set square links, wristwatch length 16cm. £400-£600

377



A DIAMOND SET COCKTAIL WATCH, the tonneau-shaped dial with black Arabic numerals, 15 jewel movement, case signed 'platinum, Vertex' and numbered '495/7666', the bezel and geometric shoulders set throughout with single-cut diamonds, to an articulated bracelet of single-cut diamond set square links, wristwatch length 16cm. £400-£600

378



A PAIR OF DIAMOND EARSTUDS AND AN EARLY 20TH CENTURY DIAMOND SET COCKTAIL WATCH, the earstuds comprising brilliant-cut diamonds in simple four claw stud mounts, the cocktail watch with silvered dial with black Arabic numerals, jewelled manual wind movement, case stamped 'platinum, London made', with geometric millegrained shoulders set with single-cut diamonds, to a black cordette strap, earstuds total diamond weight approximately 0.3 carats, watch dial dimensions 14.5 x 7.2mm. £340-£400

379



A LADY'S PANTHERE VENDOME WRISTWATCH, BY CARTIER, the signed silvered dial with chapter ring of black Roman numerals with secret signature, quartz movement, the stainless steel and gold case with screwhead details to the bezel, signed and numbered '1057920, 19771', to a stainless steel and gilt brick-link bracelet strap, with signed deployant clasp, accompanied by signed suedette pouch and papers, dial diameter 17mm.

£1200-1500

380



A TRAVEL CLOCK, BY MUST DE CARTIER, the signed white circular dial with black Roman numerals, within a polished gold plated mount, signed and numbered '0510697', in fitted Cartier case and accompanied by guarantee and other paperwork, together with another gold plated travel clock, a gold plated Parker pen, and a single row uniform cultured pearl necklace.

£240-£300



381

**AN 18CT WHITE GOLD DRESS WRISTWATCH, BY VACHERON CONSTANTIN**, the polished black rectangular dial signed and with tapered hands, signed manual wind movement numbered '1003/1', the case signed, stamped '18k' and bearing UK import marks, the bezel and integral tapered bracelet strap of textured and polished woven-link design, clasp signed, *wristwatch length 18cm.* **£3,000-£4,000**



382

**A GENTLEMAN'S DIAMOND SET WRISTWATCH, BY PIAGET**, the openwork track-link style dial pavé set with brilliant-cut diamonds, the glass signed, with signed quartz movement and signed case, stamped '750' with Swiss marks, within diamond set bezel, to track-link bracelet strap pavé set with brilliant-cut diamonds, *wristwatch length 17.8cm.* **£4,000-£6,000**



PIAGET  
PIAGET



383



**A SILVER CASED HALF HUNTER POCKET WATCH BY SMITH & SON LTD**, the white enamel dial with black Roman numerals and subsidiary seconds dial, signed 'S. Smith & Son Ltd, Trafalgar Square, London' and numbered '84-282', the full plate movement similarly signed and numbered and stamped 'Makers to the Admiralty' and 'Reg 289239', the silver half hunter case with blue enamel chapter ring, hallmarked for London, 1914', together with a further silver half hunter cased pocket watch, by Limit, *first watch diameter 50.05mm.* **£140-£180**

x384

**A GOLD CASED OPEN FACED POCKET WATCH**, the gilt dial with applied Roman numerals, subsidiary seconds dial and central engraved landscape detail, jewelled lever movement unsigned, the gilt cuvette signed 'M.J. Tobias, London, Detach'd lever, 13 jewels, No 78800', the engine turned case with escutcheon detail to the reverse, stamped '18k', *diameter 47mm.* **£300-400**



x385



**A SLIM OPEN FACED POCKET WATCH**, the silvered dial with engraved landscape detail to the centre within a scrolled border, with black Roman numerals and subsidiary seconds dial at numeral 6, jewelled lever escape movement, gilt cuvette signed 'M.J. Tobias, Liverpool, No 2685, Detach'd lever, 13 jewels', white precious metal case with engine-turned striped decoration and scrolled borders and central escutcheon, *diameter 49.5mm.* **£100-150**



386



**A FRENCH GOLD HUNTER CASED CALENDAR AND MOONPHASE POCKET WATCH**, the white enamel dial with black Roman numerals and outer 0-60 minutes scale, three small subsidiary dials for day, date and month, and larger subsidiary dial for seconds with moonphase aperture, the scrolled gilt hand accented with rose-cut diamonds, jewelled movement, the plain gold case stamped '18k' and bearing French and Swiss marks, gold cuvette signed 'No 5881, Remontion Ancre, Ligne driot Chaton, Spiral Breguet 32 Rubies, Balancier Compense, Triple Quantieme, Pahse Lunaire', diameter 49mm.

£1,200-£1,400

387



**AN 18CT GOLD POCKET WATCH, BY BARBER, CATTLE AND NORTH, OF YORK**, the gilt dial with Roman numerals and three colour foliate detail, the full plate movement with steel balance wheel, signed and numbered '5147', the engine-turned case with scrolled foliate borders hallmarked for London, 1828, diameter 43mm.

£400-£600



388



**A GOLD HUNTER POCKET WATCH, BY LONGINES**, the signed white enamel dial with black Arabic numerals and subsidiary seconds dial, jewelled top wind movement signed and numbered '2218359', the polished case signed and stamped '18k', with signed gold cuvette, diameter 55mm. £1,400-£1,800

389



**A FRENCH GOLD HUNTER CASED POCKET WATCH, BY VICTOR FLEURY, PARIS**, the white enamel dial with black Roman numerals, gilt minute spots and outer 0-60 minutes scale, and subsidiary seconds dial with gilt chapter ring, jewelled movement, plain gold case bearing French guarantee marks, cuvette signed 'Victor Fleury, 23 Rue de la Paix, Paris', inside of the lid inscribed 'R.M. Ballantyne, 1824-1894', diameter 52mm. £600-£800

390



**AN 18CT GOLD OPEN FACED FOB WATCH**, the white enamel with black Roman numerals, jewelled lever movement, in a scroll engraved case, stamped '18c', gold cuvette signed 'By appointment, Maker to the Queen, T. R. Russell, 18 Church Street, Liverpool, Swiss made', diameter 38mm. £300-£400

391



**A QUARTER REPEATING CHRONOGRAPH HUNTER POCKET WATCH, BY THE NATIONAL WATCH COMPANY,** the white enamel dial with black Roman numerals, subsidiary seconds dial and outer 0-300 chronograph scale, signed 'National Watch Co, Chaux-de-Fonds', with scrolled gilt hands and blued steel chronograph hand, unsigned jewelled movement with two chimes, the hunter case stamped '18c', with signed gold cuvette and chronograph and repeater push buttons to the band, diameter 55mm. £1,000-£1,200

392



**AN OPEN FACED POCKET WATCH, BY ZENITH,** the signed silvered dial with black Arabic numerals and subsidiary seconds dial, with reeded screw down bezel, signed jewelled movement, plain polished outer case stamped '18k' and with Swiss marks, with antimagnetic metal inner case, diameter 49mm. £750-£850

393



**A GOLD HUNTER CASED POCKET WATCH, BY J. S. TOWNSEND, 1554 WABASH AVENUE, CHICAGO,** the signed white enamel dial with black Arabic numerals, outer red minutes scale and subsidiary seconds dial, with blued steel club hands, the full plate, top wind movement signed and numbered '699990', the gold cuvette bearing presentation inscription of four sets of initials and dates from 1867 to 1956, the case scroll engraved all over with starburst accents and small blank escutcheon to the front, stamped 'Warranted 18 carat fine', diameter 54mm. £800-£1,000

394



**AN 18CT WHITE GOLD AND DIAMOND SET GENTLEMAN'S WATCH, BY CHOPARD,** the signed circular mother-o'-pearl dial with diamond spot numerals, within bezel of brilliant-cut diamonds, to integral brick-link polished bracelet strap, reverse numbered '475619 946 1', diameter 36mm, length 18.8cm.  
**£2,000-£3,000**

395



**A LADY'S 18CT GOLD CALATRAVA TRAVEL TIME WRISTWATCH, BY PATEK PHILIPPE, REF 5034,** the signed white enamel dial with applied gilt Arabic numerals and subsidiary dials for seconds at numeral 6 and 24 hours at numeral 12, with silvered sweep hands and further gilt sweep hour hand for local time, with calibre 215/156 (215 PS FUS 24h) manual wind movement, numbered '3083396/407683', the 18ct gold case with milled bezel, signed, stamped '750', with cabochon sapphire winder and two push buttons to advance and retreat the local hours hand, to a signed pale green 'crocodile' leather strap, with signed gold clasp, with signed suede pouch and papers, including Certificate of Origin, ref. 4864R-001, dated 2001, dial diameter 24.5mm.  
**£3000-5000**

"Designed as the ideal traveller's wristwatch, the ref. 5034 Patek Philippe Travel Time adjust to local time at the press of a button, while continuing to show the time at home. The time-zone complication, consisting of 48 parts, is confined to the under-dial train, mounted on the special base-plate of the calibre 215/156 manually wound movement. Pressing the buttons in the case-band moves the local hours-hand in one-hour steps back or forwards. The local hours hand is the same colour as the minutes hand and is mounted above the home hours hand." Taken from the accompanying paperwork.



  
**PATEK PHILIPPE**  
GENEVE

*Certificat d'Origine*  
*Certificate of Origin*

Nous certifions que la montre  
We certify that the watch

Référence:

Mouvement:

Calibre:

a été construite et réglée à

was manufactured, and

Rubis / Movement jewels:

Cadran / Dial: BLANC /

Boîtier / Case: Or rose

Bracelet / Bracelet: CUIR

Pierres / Gem stones:



Name and address of owner:



396



**TWO POCKET COMPASSES AND A SMALL FOB COMPASS**, the first white metal mounted, by 'Dollond, London', the second gilt metal mounted, in semi fitted case, the compass fob gilt metal mounted and in shaped semi fitted case. £100-£150

397



**A GILT BRASS POCKET COMPENSATED BAROMETER, WITH ALTIMETER AND THERMOMETER**, the dial with curved thermometer and 0-160 degrees Fahrenheit scale above, barometric scale of 21 to 31 inches, and revolving altitude scale of 0 to 8000 feet, blued steel hand, dial unsigned, in fitted case, the silk to the inside lid with gilt crown detail, together with a second gilt brass pocket barometer altimeter compensated science weather gauge, with rotating outer dial for altitude function, scale from 0 to 8000 feet, barometric sale from 23 to 31 inches, blued steel hand, with case (possibly unassociated case), first diameter 5cm, second 4.8cm. £100-200

398

A GENTLEMAN'S 16610 SUBMARINER WRISTWATCH, BY ROLEX, the signed black dial with luminous hands and spot, baton and dart hour markers, and date aperture at 3 o'clock, automatic movement, in steel case with screw down back and signed crown, numbered 'Orig Rolex design 16610' and 'Stainless steel S946195' between the lugs, with a black enamel rotating bezel, to a stainless steel Rolex Oyster bracelet strap, dial diameter 30mm, wristwatch length 17cm. £3,000-£5,000



399



AN 18CT WHITE GOLD AND DIAMOND SET GENTLEMAN'S CALENDAR WRISTWATCH, BY JORDAN BY VALERIE, the signed white enamel dial with black Roman numerals and date aperture at numeral 3, quartz movement, in polished case with cabochon winder and brilliant-cut diamonds set bezel, to a polished brick-link bracelet strap, case and clasp stamped '18k, 750, Italy', with box and certificate, dial diameter 25mm. £1,000-£1,500

End of Sale





# Index of Makers

Kjel Alhömerstadt.....	Lot 97
V. M. Ashmarin.....	Lot 347
Asprey & Co. ....	Lot 370
Aston & Son.....	Lot 360
Barber, Cattle & North .....	Lot 287
Barbara Bertagnolli .....	Lots 121, 122 and 123
Boodle & Dunthorne .....	Lot 275
Boucheron .....	Lots 132 and 145
Carrera y Carrera .....	Lot 160
Cartier .....	Lots 162, 337, 379 and 380
Jason Charles .....	Lot 96
Chopard.....	Lot 68 and 394
Concord.....	Lot 373
Cropp & Farr.....	Lot 214
Deakin & Francis .....	Lot 43
Charles de Temple.....	Lots 69, 70, 71 and 72
Dunhill .....	Lot 76
Eterna .....	Lot 375
Victor Fleury .....	Lot 389
Garrard & Co.....	Lots 42, 113 and 115
Georg Jensen .....	Lots 86, 87, 88, 89, 90, 91, 92 and 219
Hans Hansen .....	Lots 91 and 93
Paul Hansen .....	Lot 91
Charmain Harris.....	Lot 50
Hilliard & Thomason.....	Lots 350 and 356
Wang Hing .....	Lot 359
Jaeger le Coultre.....	Lot 370
Thomas Johnson II.....	Lot 362
Longines .....	Lot 388
Mauboussin .....	Lot 60
Mikimoto .....	Lot 197
Nathaniel Mills .....	Lot 357
Murre Bennett & Co .....	Lot 38
Dorrie Nossiter .....	Lot 40
Tom McEwan .....	Lot 125
Omega.....	Lots 45, 371 and 374
Mosheh Oved .....	Lot 62
Patek Philippe .....	Lot 395
Diego Percossi Papi.....	Lot 361
Piaget.....	Lot 382
Pioray .....	Lot 288
Rolex .....	Lot 398
Thomas Russell .....	Lot 390
Sampson Mordan & Co.....	Lot 338, 363 and 366
Jean Schlumberger .....	Lot 143
Walter Thornhill.....	Lot 336
Tiffany & Co.....	Lots 63, 64, 65, 66, 67, 143 and 257
Vivian Torun .....	Lots 86, 87 and 88
J. S. Townsend.....	Lot 393
Van Cleef & Arpels.....	Lots 307 and 308
Vacheron Constantin .....	Lot 381
Versace.....	Lot 99
Zenith .....	Lot 392





## DIAMONDS

Diamonds are assessed according to the four Cs:

### Carat weight

1 carat equals 0.2 grams.

### Cut

The quality of a cut is assessed in terms of its proportions, symmetry and polish.

### Colour

Unless regarded as a 'fancy' coloured diamonds, all diamonds are graded on their lack of colour. The gradings runs as follows:

GIA	CIBJO	Traditional
D	Exceptional White + (EW+)	Finest White
E	Exceptional White (EW)	Finest White
F	Rare White + (RW+)	Fine White
G	Rare White (RW)	Fine White
H	White (W)	White
I	Slightly Tinted White (STW)	Commercial White
J	Slightly Tinted White (STW)	Top Silver Cape
K	Tinted White (TW)	Top Silver Cape
L	Tinted White (TW)	Silver Cape
M-Z	Tinted Colour (TC)	Cape
Fancy	Fancy Colour	

### Clarity

Diamonds are graded on their freedom from inclusions (within the stone) and blemishes (found on the surface of the stone). They are assessed using 10x magnification, and are graded as follows:

GIA	CIBJO	Description
Flawless (FL)	Loupe Clean (LC)	Shows no inclusions or blemishes
Internally Flawless (IF)	Loupe Clean (LC)	Shows no inclusions and only insignificant blemishes
Very Very Slightly Included (VVS1/2)	Very Very Slightly Included (VVS1-2)	Contains minute inclusions which are very difficult for an experienced grader to see with 10x magnification
Very Slightly Included (VS1-2)	Very Slightly Included (VS1-2)	Contains very small inclusions that are difficult to see with 10x magnification
Slightly Included (SI1-2)	Slightly Included (SI1-2)	Contains inclusions that are easily visible with 10x magnification
Imperfect/Included (I1-3)	Pique (P1-3)	Contains inclusions that are obvious with 10x magnification and can often be seen with the naked eye; durability may be affected

Please note the four Cs of a diamond cannot be fully assessed whilst the stone is mounted. The approximate gradings provided in the condition reports are estimations, made by the specialists whilst the stones were mounted and are for guidance only. If a stone has been unmounted and assessed in a gemmological laboratory, this will be noted in the cataloguing/condition report.



*We are currently accepting entries for our forthcoming*  
**Jewellery, Watches and Objects of Vertu Sale**  
*to be held on*

**Tuesday 26th March 2019 at 2pm**

*Closing date for entries 12th February*

*This sale will include a silver gilt titanium and enamelled water lily mazer bowl by LOUIS OSMAN,  
presented to Peter Jenkins, retiring Clerk of the Goldsmiths in 1988  
Estimate £10,000-15,000*

All enquiries please contact Frances Noble or Laura Smith  
on 020 7016 1700 or email [jewellery@dnw.co.uk](mailto:jewellery@dnw.co.uk)



**London Specialist Auctioneers**  
Jewellery Medals Coins Banknotes





**London Specialist Auctioneers**  
Jewellery Medals Coins Banknotes

*Forthcoming Auction*

# **Orders, Decorations, Medals and Militaria**

*to be held on*

**Wednesday 5th December**

**and**

**Thursday 6th December**

**at 10am**



**All enquiries please contact Oliver Pepys or Mark Quayle  
on 020 7016 1700 or email [medals@dnw.co.uk](mailto:medals@dnw.co.uk)**

*Image shows The Most Honourable Order of the Bath  
GCB (Military) Knight Grand Cross breast star  
Estimate £2,400-2,800  
to be included in this auction*

*Image shows a pair of Art Deco sapphire and diamond  
ear pendants to be included in this sale*



### Commission Form – Jewellery 29 November 2018

Please bid on my behalf at the above sale for the following Lot(s) up to the price(s) mentioned below. These bids are to be executed as cheaply as is permitted by other bids or any reserve. I understand that in the case of a successful bid, a premium of 20 per cent (plus VAT if resident in, or posted to within, the European Union) will be payable by me on the hammer price of all lots.

**Please ensure your bids comply with the steps outlined below:-**

**Up to £100** by £5

**£100 to £200** by £10

**£200 to £500** by £20

**£500 to £1,000** by £50

**£1,000 to £2,000** by £100

**£2,000 to £5,000** by £200

**£5,000 to £10,000** by £500

**£10,000 to £20,000** by £1,000

**£20,000 to £50,000** by £2,000

**£50,000 to £100,000** by £5,000

**Over £100,000** by £10,000

Bids of unusual amounts **will be rounded down** to the bid step below and will **not** take precedence over a similar bid unless received first. All absentee bids will be executed in the name of 'Wood'.

**NOTE:** All bids placed other than via our website should be received by 16:00 on the day prior to the sale. Although we will endeavour to execute any late bids, DNW cannot accept responsibility for bids received after that time. It is strongly advised that you use our online **Advance Bidding Facility**. If you have a valid email address bids may be entered, and amended or cancelled, online at [www.dnw.co.uk](http://www.dnw.co.uk) right up until a lot is offered. You will receive a confirmatory email for all bids and amendments. Bids posted or faxed to our office using this form will now be entered by our staff into the system using exactly this facility to which our clients now have access. **There is, therefore, no better way of ensuring the accuracy of your advance bids than to place them yourself online.**

I confirm that I have read and agree to abide by the Terms and Conditions of Sale printed in the catalogue.

Signed \_\_\_\_\_

Name (Block Capitals) \_\_\_\_\_ Client Code \_\_\_\_\_

Address \_\_\_\_\_

Tel: \_\_\_\_\_ E-mail \_\_\_\_\_

If successful, I wish to pay for my purchases by (please indicate):

☐ Cash ☐ Cheque ☐ Credit/Debit Card (see below) ☐ Bank Transfer

☐ Other (please give details) \_\_\_\_\_

**Please note that all payments for purchases by credit card are subject to a 2 percent surcharge on the total invoice price. All payments to be made in pounds sterling.**

If successful, I wish to pay for my purchases by (please indicate):

☐ Master Card ☐ Visa ☐ Amex ☐ Debit card (no surcharge) Issue No

Name (as shown on card) \_\_\_\_\_

Card no. \_\_\_\_\_ Start Date  /  Expiry Date  /

Your bids may be placed overleaf



## Commission Form – Jewellery 29 November 2018

You may specify a “plus one” bid if you wish, so that in the event that the bidding is against you when your maximum bid is reached this will increase your bid to the next increment. Write “+1” next to your bid.



Lot No	£ Bid	Lot No	£ Bid	Lot No	£ Bid

### Saleroom Notices

Any Saleroom Notices relevant to this auction are automatically posted on the Lot Description pages on the our website. Prospective buyers are strongly advised to consult the site for updates.

### Successful Bids

Should you be a successful bidder you will receive an invoice detailing your purchases. All purchases are sent by registered post unless otherwise instructed, for which a minimum charge of £12.00 (plus VAT if resident in the European Union) will be added to your invoice.

**All payments for purchases must be made in pounds sterling. Please check your bids carefully and complete the payment instructions overleaf.**

### Prices Realised

The hammer prices bid at the auction are posted on the Internet at **www.dnw.co.uk** in real time. A full list of prices realised appear on our website as the auction progresses. Telephone enquiries are welcome from 09:00 the following day.

# Important Information for Buyers

## Absentee Bids

It is recommended that absentee bids are placed using our online advance bidding facility, which is available on our website at [www.dnw.co.uk](http://www.dnw.co.uk). Bids placed in this way cannot be seen by others and do not go live until the actual moment that the lot in question is being offered for sale. All bids can be easily altered or cancelled by the bidder prior to this point. An automated email will be sent confirming all bids and alterations.

A valid email address is required to bid online.

There is no additional charge for online bidding and it is not necessary to pre-register a payment card in order to do so.

Whilst we are still happy to execute all bids submitted in writing or by phone, fax, etc., it should be noted that bids left with us will be entered at our offices using the same bidding facility to which all our clients have access. There is, therefore, no better way of ensuring the accuracy of your bids than to execute them yourself online.

**Whilst online bids can be placed up until the moment a lot is offered for sale, all other bids made to the office must be confirmed in writing, by fax or e-mail and should be received by 14:00 on the day before the auction. Although we will endeavour to execute late bids, Dix Noonan Webb Ltd cannot accept responsibility for any bids received later than this.**

## Commission Form

Further advice to bidders and purchasers may be found on the commission form included with this catalogue. Please use this form when sending bids to us by post or fax.

## Buyers' Premium

**A buyers' premium of 20% on the hammer price** (plus VAT if resident in, or lots are delivered within, the European Union) **is payable by the buyer on all lots.**

## Pre-sale Estimates

The pre-sale estimates are intended as a guide for prospective purchasers. Any bid between the listed figures would, in our opinion, offer a fair chance of success. However all lots, depending on the degree of competition, can realise prices either above or below the listed estimates.

## New Clients

New clients must register online to bid (whether in person or in absentia) and any such registrations will only be accepted once due diligence has been completed to the satisfaction of Dix Noonan Webb.

Registration requests, together with auction house references and identification/proof of address as requested should be submitted as early as possible and certainly not later than one business day before the auction.

Whilst every endeavour is made to complete the registration process as quickly as possible, Dix Noonan Webb cannot be held responsible if it is not completed in time for a bid to be placed.

Dix Noonan Webb reserve the right to refuse any registration without explanation.

## Methods of Payment

**All payments must be made in pounds sterling within five days of the end of a sale unless credit terms have been made by prior arrangement.**

The best way to make payment is by Visa or MasterCard credit or debit cards via our website [www.dnw.co.uk](http://www.dnw.co.uk). Carriage and insurance is pre-calculated for you so that you may pay immediately.

Payment may also be made by bank transfer to DNW's account at:

Lloyds  
Piccadilly London Branch  
39 Piccadilly  
London W1J 0AA

Sort Code: 30-96-64

Account No: 00622865

Swift Code: LOYDGB2L

IBAN: GB70LOYD30966400622865

BIC: LOYDGB21085

Please include your surname, client code and auction date with the instructions to the bank. Alternative methods of payment which may enable immediate clearance of purchases include cash, recognised banker's drafts, credit cards (Master Card, Visa and Amex) and debit cards. Although personal and company cheques are accepted, buyers are advised that property will not be released until such cheques have fully cleared and cannot be subject to recall, which may take two weeks. Third party payment is not accepted except by prior arrangement. Cardholder not present transactions will only be accepted when successfully completed through our online payment platform. Clients may be required to pay by bank transfer for their first purchase or at other times at sole discretion of Dix Noonan Webb.

**Please note that we will not accept cash payments in excess of £5,000 (five thousand pounds) in settlement for purchases made at any one auction.**

Purchases will be despatched as soon as possible upon full payment in pounds sterling for the lots you have bought. Carriage will be at the buyer's expense. Estimates and advice on all methods of despatch can be provided upon request.

Insurance cover will be arranged unless otherwise specified and will be added to the carriage charge for non-UK deliveries.

Goods can only be shipped to the address provided to and verified by Dix Noonan Webb at the time of registration.

## Change of Address

Change of address requests will be subject to the same due diligence by Dix Noonan Webb as at the time of registration.

# Conditions of Business

## Conditions mainly concerning Buyers

### 1 The buyer

The highest bidder shall be the buyer at the 'hammer price' and any dispute shall be settled at the auctioneer's absolute discretion. Every bidder shall be deemed to act as principal unless there is in force a written acknowledgement by Dix Noonan Webb Ltd ("DNW") that he acts as agent on behalf of a named principal. Bids will be executed in the order that they are received.

### 2 Minimum increment

The auctioneer shall have the right to refuse any bid which does not conform to Dix Noonan Webb's published bidding increments which may be found at [dnw.co.uk](http://dnw.co.uk) and in the bidding form included with the auction catalogue.

### 3 The premium

The buyer shall pay to DNW a premium on the 'hammer price' in accordance with the percentages set out above and agrees that DNW, when acting as agent for the seller, may also receive commission from the seller in accordance with Condition 15.

### 4 Value Added Tax (VAT)

The buyers' premium is subject to the current rate of Value Added Tax if the lot is delivered to the purchaser within the European Union.

**Lots marked 'x' are subject to importation duty of 5% on the hammer price unless re-exported outside the EU.**

The provision of a VAT form C88 is subject to the discretion of DNW and will be subject to an administration fee of £50.

### 5 Payment

When a lot is sold the buyer shall:

(a) confirm to DNW his or her name and address and, if so requested, give proof of identity; and

(b) pay to DNW the 'total amount due' in pounds sterling within five working days of the end of the sale (unless credit terms have been agreed with Dix Noonan Webb before the auction). Please note that, as stated above, we will not accept cash payments in excess of £5,000 (five thousand pounds) in settlement for purchases made at any one auction.

6 DNW may, at its absolute discretion, agree credit terms with the buyer before an auction under which the buyer will be entitled to take possession of lots purchased up to an agreed amount in value in advance of payment by a determined future date of the 'total amount due'.

7 Any payments by a buyer to DNW may be applied by DNW towards any sums owing from that buyer to DNW on any account whatever, without regard to any directions of the buyer, his or her agent, whether expressed or implied.

### 8 Collection of purchases

The ownership of the lot(s) purchased shall not pass to the buyer until he or she has made payment in full to DNW of the 'total amount due' in pounds sterling.

9 (a) The buyer shall at his or her own expense take away the lot(s) purchased not later than 5 working days after the day of the auction but (unless credit terms have been agreed in accordance with Condition 7) not before payment to DNW of the 'total amount due'.

(b) The buyer shall be responsible for any removal, storage and insurance charges on any lot not taken away within 5 working days after the day of the auction.

(c) The packing and handling of purchased lots by DNW staff is undertaken solely as a courtesy to clients and, in the case of fragile articles, will be undertaken only at DNW's discretion. In no event will DNW be liable for damage to glass or frames, regardless of the cause. Bulky lots or sharp implements, etc., may not be suitable for in-house shipping.

### 10 Buyers' responsibilities for lots purchased

The buyer will be responsible for loss or damage to lots purchased from the time of collection or the expiry of 5 working days after the day of the auction, whichever is the sooner. Neither DNW nor its servants or agents shall thereafter be responsible for any loss or damage of any kind, whether caused by negligence or otherwise, while any lot is in its custody or under its control.

Insurance at the rate of 1.5% will be applied to any lots despatched by DNW to destinations outside the UK, unless specifically instructed otherwise by the consignee.

### 11 Remedies for non-payment or failure to collect purchase

If any lot is not paid for in full and taken away in accordance with Conditions 6 and 10, or if there is any other breach of either of those Conditions, DNW as agent of the seller shall, at its absolute discretion and without prejudice to any other rights it may have, be entitled to exercise one or more of the following rights and remedies:

(a) to proceed against the buyer for damages for breach of contract.

(b) to rescind the sale of that or any other lots sold to the defaulting buyer at the same or any other auction.

(c) to re-sell the lot or cause it to be re-sold by public auction or private sale and the defaulting buyer shall pay to DNW any resulting deficiency in the 'total amount due' (after deduction of any part payment and addition of re-sale costs) and any surplus shall belong to the seller.

(d) to remove, store and insure the lot at the expense of the defaulting buyer and, in the case of storage, either at DNW's premises or elsewhere.

(e) to charge interest at a rate not exceeding 2 percent per month on the 'total amount due' to the extent it remains unpaid for more than 5 working days after the day of the auction.

(f) to retain that or any other lot sold to the same buyer at the sale or any other auction and release it only after payment of the 'total amount due'.

(g) to reject or ignore any bids made by or on behalf of the defaulting buyer at any future auctions or obtaining a deposit before accepting any bids in future.

(h) to apply any proceeds of sale then due or at any time thereafter becoming due to the defaulting buyer towards settlement of the 'total amount due' and to exercise a lien on any property of the defaulting buyer which is in DNW's possession for any purpose.

### 12 Liability of Dix Noonan Webb and sellers

(a) Goods auctioned are usually of some age. All goods are sold with all faults and imperfections and errors of description. Illustrations in catalogues are for identification only. Buyers should satisfy themselves prior to the sale as to the condition of each lot and should exercise and rely on their own judgement as to whether the lot accords with its description. Subject to the obligations accepted by DNW under this Condition, none of the seller, DNW, its servants or agents is responsible for errors of descriptions or for the genuineness or authenticity of any lot. No warranty whatever is given by DNW, its servants or agents, or any seller to any buyer in respect of any lot and any express or implied conditions or warranties are hereby excluded.

(b) Any lot which proves to be a 'deliberate forgery' may be returned by the buyer to DNW within 15 days of the date of the auction in the same condition in which it was at the time of the auction, accompanied by a statement of defects, the number of the lot, and the date of the auction at which it was purchased. If DNW is satisfied that the item is a 'deliberate forgery' and that the buyer has and is able to transfer a good and marketable title to the lot free from any third party claims, the sale will be set aside and any amount paid in respect of the lot will be refunded, provided that the buyer shall have no rights under this Condition if:

(i) the description in the catalogue at the date of the sale was in accordance with the then generally accepted opinion of scholars and experts or fairly indicated that there was a conflict of such opinion; or

(ii) the only method of establishing at the date of publication of the catalogue that the lot was a 'deliberate forgery' was by means of scientific processes not generally accepted for use until after publication of the catalogue or a process which was unreasonably expensive or impractical.

(c) A buyer's claim under this Condition shall be limited to any amount paid in respect of the lot and shall not extend to any loss or damage suffered or expense incurred by him or her.

(d) The benefit of the Condition shall not be assignable and shall rest solely and exclusively in the buyer who, for the purpose of this condition, shall be and only be the person to whom the original invoice is made out by DNW in respect of the lot sold.

## Conditions mainly concerning Sellers and Consignors

### 13 Warranty of title and availability

The seller warrants to DNW and to the buyer that he or she is the true owner of the property or is properly authorised to sell the property by the true owner and is able to transfer good and marketable title to the property free from any third party claims. The seller will indemnify DNW, its servants and agents and the buyer against any loss or damage suffered by either in consequence of any breach on the part of the seller.

### 14 Reserves

The seller shall be entitled to place, prior to the first day of the auction, a reserve at or below the low estimate on any lot provided that the low estimate is more than £100. Such reserve being the minimum 'hammer price' at which that lot may be treated as sold. A reserve once placed by the seller shall not be changed without the consent of DNW. DNW may at their option sell at a 'hammer price' below the reserve but in any such cases the sale proceeds to which the seller is entitled shall be the same as they would have been had the sale been at the reserve. Where a reserve has been placed, only the auctioneer may bid on behalf of the seller.

### 15 Authority to deduct commission and expenses

The seller authorises DNW to deduct commission at the 'stated rate' and 'expenses' from the 'hammer price' and acknowledges DNW's right to retain the premium payable by the buyer.

### 16 Rescission of sale

If before DNW remit the 'sale proceeds' to the seller, the buyer makes a claim to rescind the sale that is appropriate and DNW is of the opinion that the claim is justified, DNW is authorised to rescind the sale and refund to the buyer any amount paid to DNW in respect of the lot.

### 17 Payment of sale proceeds

DNW shall remit the 'sale proceeds' to the seller not later than 35 days after the auction, but if by that date DNW has not received the 'total amount due' from the buyer then DNW will remit the sale proceeds within five working days after the date on which the 'total amount due' is received from the buyer. If credit terms have been agreed between DNW and the buyer, DNW shall remit to the seller the sale proceeds not later than 35 days after the auction unless otherwise agreed by the seller.

18 If the buyer fails to pay to DNW the 'total amount due' within 3 weeks after the auction, DNW will endeavour to notify the seller and take the seller's instructions as to the appropriate course of action and, so far as in DNW's opinion is practicable, will assist the seller to recover the 'total amount due' from the buyer. If circumstances do not permit DNW to take instructions from the seller, the seller authorises DNW at the seller's expense to agree special terms for payment of the 'total amount due', to remove, store and insure the lot sold, to settle claims made by or against the buyer on such terms as DNW shall in its absolute discretion think fit, to take such steps as are necessary to collect monies due by the buyer to the seller and if necessary to rescind the sale and refund money to the buyer if appropriate.

19 If, notwithstanding that, the buyer fails to pay to DNW the 'total amount due' within three weeks after the auction and DNW remits the 'sale proceeds' to the seller, the ownership of the lot shall pass to DNW.

### 20 Charges for withdrawn lots

Where a seller cancels instructions for sale, DNW reserve the right to charge a fee of 15 per cent of DNW's then latest middle estimate of the auction price of the property withdrawn, together with Value Added Tax thereon if the seller is resident in the European Union, and 'expenses' incurred in relation to the property.

### 21 Rights to photographs and illustrations

The seller gives DNW full and absolute right to photograph and illustrate any lot placed in its hands for sale and to use such photographs and illustrations and any photographs and illustrations provided by the seller at any time at its absolute discretion (whether or not in connection with the auction).

### 22 Unsold lots

Where any lot fails to sell, DNW shall notify the seller accordingly. The seller shall make arrangements either to re-offer the lot for sale or to collect the lot.

23 DNW reserve the right to charge commission up to one-half of the 'stated rates' calculated on the 'bought-in price' and in addition 'expenses' in respect of any unsold lots.

## General Conditions and Definitions

24 DNW sells as agent for the seller (except where it is stated wholly or partly to own any lot as principal) and as such is not responsible for any default by seller or buyer.

25 Any representation or statement by DNW, in any catalogue as to authorship, attribution, genuineness, origin, date, age, provenance, condition or estimated selling price is a statement of opinion only. Every person interested should exercise and rely on his or her own judgement as to such matters and neither DNW nor its servants or agents are responsible for the correctness of such opinions.

26 Whilst the interests of prospective buyers are best served by attendance at the auction, DNW will, if so instructed, execute bids on their behalf. Neither DNW nor its servants or agents are responsible for any neglect or default in doing so or for failing to do so.

27 DNW shall have the right, at its discretion, to refuse admission to its premises or attendance at its auctions by any person.

28 DNW has absolute discretion without giving any reason to refuse any bid, to divide any lot, to combine any two or more lots, to withdraw any lot from the auction and in case of dispute to put up any lot for auction again.

29 (a) Any indemnity under these Conditions shall extend to all actions, proceedings costs, expenses, claims and demands whatever incurred or suffered by the person entitled to the benefit of the indemnity.

(b) DNW declares itself to be a trustee for its relevant servants and agents of the benefit of every indemnity under these Conditions to the extent that such indemnity is expressed to be for the benefit of its servants and agents.

30 Any notice by DNW to a seller, consignor, prospective bidder or buyer may be given by first class mail or airmail and if so given shall be deemed to have been duly received by the addressee 48 hours after posting.

31 These Conditions shall be governed by and construed in accordance with English law. All transactions to which these Conditions apply and all matters connected therewith shall also be governed by English law. DNW hereby submits to the exclusive jurisdiction of the English courts and all other parties concerned hereby submit to the non-exclusive jurisdiction of the English courts.

### 32 In these Conditions:

(a) 'catalogue' includes any advertisement, brochure, estimate, price list or other publication;

(b) 'hammer price' means the price at which a lot is knocked down by the auctioneer to the buyer;

(c) 'total amount due' means the 'hammer price' in respect of the lot sold together with any premium, Value Added Tax chargeable and additional charges and expenses due from a defaulting buyer in pounds sterling;

(d) 'deliberate forgery' means an imitation made with the intention of deceiving as to authorship, origin, date, age, period, culture or source which is not shown to be such in the description in the catalogue and which at the date of the sale had a value materially less than it would have had if it had been in accordance with that description;

(e) 'sale proceeds' means the net amount due to the seller being the 'hammer price' of the lot sold less commission at the 'stated rates' and 'expenses' and any other amounts due to DNW by the seller in whatever capacity and howsoever arising;

(f) 'stated rate' means DNW's published rates of commission for the time and any Value Added Tax thereon;

(g) 'expenses' in relation to the sale of any lot means DNW charges and expenses for insurance, illustrations, special advertising, packing and freight of that lot and any Value Added Tax thereon;

(h) 'bought-in price' means 5 per cent more than the highest bid received below the reserve.

### 33 Vendors' commission of sales

A commission of 15 per cent is payable by the vendor on the hammer price on lots sold.

### 34 VAT

Commission, illustrations, insurance and advertising are subject to VAT if the seller is resident in the European Union.







[www.dnw.co.uk](http://www.dnw.co.uk)

We were established in 1991 and are located in a six-storey Georgian building in the heart of London's Mayfair, two minutes walk from Green Park underground station.

Our staff of experts collectively have over 300 years of unrivalled experience on all aspects of numismatics and jewellery, including coins of all types, tokens, commemorative medals, paper money, orders, decorations, war medals, militaria, numismatic books, jewellery, watches, objects of vertu, gemology and diamond grading.

We hold numerous auctions each year, the full contents of which are published on the internet around one month before the sale date, together with a unique preview facility which is available as lots are catalogued and photographed. Printed auction catalogues for auctions are mailed to subscribers approximately three weeks prior to each sale.



*Auction viewing room*



*Reception*

Our offices, open from 9am to 5:30pm, Monday to Friday, include a pre-auction viewing room, enabling us to offer this facility to clients during the three weeks prior to an auction.

Auctions are held in our building at 16 Bolton Street, Mayfair, where sales may be attended in person. Free online bidding is available using our own live bidding system or by placing commission bids, all of which and much more being available via our website at [www.dnw.co.uk](http://www.dnw.co.uk).

We look forward to welcoming clients to Bolton Street and assure you of a warm reception.

#### *Location*

